



Legend HIRE

TEMPORARY WORKS SPECIALISTS



Swift. Smart. **Specialist**

Equipment Hire Catalogue



WHAT MAKES US DIFFERENT

Swift.

NO RED TAPE, JUST REAL HELP. FAST.

We're a family-run business that moves fast because we care. No departments, no passing the buck—just direct help from someone who knows their stuff.

One call. No hold times. No call-backs. Just action.

Smart.

SMART SYSTEMS. SIMPLE HIRING. NO PAPER CHAINS.

Our tech handles the heavy lifting—fast quotes, easy booking, real-time tracking, and seamless invoicing, approvals and payments.

Smarter systems. Smoother jobs. Faster payments.

Specialist.

FOCUSED EXPERTISE. THE RIGHT GEAR. FIRST TIME.

We don't do a bit of everything. We focus on what matters—and know it inside out. Our team of legendary experts is here to offer advice, troubleshoot issues, and make sure your job keeps moving.

Real expertise. Better answers. Gear that fits the job.

Legend
HIRE
1300 890 890
legendhire.com.au

FAMILY OWNED AND OPERATED

Legend Hire is an Australian-owned family business, backed by the Joyce family who founded Jaybro and Orange Hire. We bring deep industry roots, hands-on experience, and a strong track record of building reliable, customer-first hire businesses from the ground up.

We go beyond simply providing equipment; we are committed to offering innovative, safe, and efficient temporary works solutions that enable our clients to complete projects with confidence. Our diverse range of products is complemented by an unwavering commitment to service excellence.

At Legend Hire, we redefine what it means to hire equipment. Our focus on expertise, state-of-the-art equipment, and transparency distinguishes us in an industry where profit often takes precedence over people. Our skilled team ensures that every project benefits from industry-leading capabilities in engineering, manufacturing, transport, and on-site installation.

As a family-owned Australian business, we take great pride in supporting the communities where we operate, contributing to the success and safety of every project we touch. We accept nothing less than legendary people, advice and equipment.

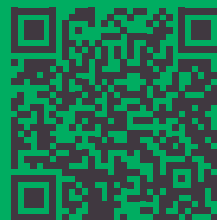
Complete our fast & easy online account application.

Online applications approved fast.

Hire on 30 days terms and get the products you need, when you need them.

- ✓ Apply online in 5-10 minutes
- ✓ Receive a response in 48 hours

**Legend
HIRE**



**APPLY
TODAY**

LEGENDARY EQUIPMENT

SHORING HIRE

PAGE 6



ROAD SAFETY HIRE

PAGE 26



PROPPING HIRE

PAGE 36



LIFT & SHIFT / JACKING HIRE

PAGE 58



EARTHMOVING HIRE

PAGE 84



STRINGING & WINCHING

CALL FOR CATALOGUE







SHORING HIRE

Aluminium Shoring Box	8
Aluminium Manhole Box	9
Steel Trench Box	12
Vertishores	13
Litebox Shoring	14
Slide Rail Shoring	16
Trench Safety	18
Bypass Plugs	23
Blocking Plugs	24

LEGEND ALUMINIUM SHORING

LEGEND Aluminium Shoring Box

Legend Aluminium shoring boxes are lightweight yet durable structures designed to provide robust protection against trench collapses and ensure a secure working environment for trenching and excavation projects.

KEY FEATURES & BENEFITS

- **Material:** High Strength Aluminium Alloy (6061-T6).
- **Dimensions:** Various sizes available (customizable upon request).
- **Weight:** Significantly lighter than steel alternatives, specific weights available per model.
- **Range:** Largest working range in the industry.
- **Height Clearance:** Adjustable vertical height clearance.
- **Operational Efficiency:** Lightweight nature and ease of handling reduce downtime and labour costs.
- **Cost-Effective:** Durable and reusable, providing long-term value for your excavation needs.
- Certified according to Australian Standards.
- Foam filled as standard.



ALUMINIUM SHORING BASE BOX (LOWER)

Dimensions (m)	Panel Thickness	Weight (2 x Panels) Kg	Pipe Clearance (m)	Length Between Spreaders	Shield Capacity (kPa)	
					Triangular Loading	Uniform Loading
1.8 x 2.4	100	800	1.4	1.3	140	110
2.4 x 2.4	100	970	1.4	1.8	90	75
3.0 x 2.4	100	1112	1.4	2.4	65	55
3.6 x 2.4	100	1310	1.4	3	75	45
4.0 x 2.4	100	1780	1.4	3.4	65	35
5.0 x 2.4	150	2600	1.4	4.2	80	65
6.0 x 2.4	150	3000	1.4	5.2	75	60

LEGEND ALUMINIUM SHORING

ALUMINIUM SHORING EXTENSION BOX (UPPER)

Dimensions (m)	Panel Thickness	Weight (2 x Panels) Kg	Pipe Clearance (m)	Length Between Spreaders	Shield Capacity (kPa)	
					Triangular Loading	Uniform Loading
1.8 x 2.0	100	770	0.9	1.3	330	210
2.4 x 2.0	100	910	0.9	1.8	280	180
3.0 x 2.0	100	1028	0.9	2.4	130	70
3.6 x 2.0	100	1126	0.9	3	85	55
4.0 x 2.0	100	1540	0.9	3.4	75	45
5.0 x 2.0	150	2324	0.9	4.2	87	57
6.0 x 2.0	150	2594	0.9	5.2	70	40

LEGEND Manhole Box

The enclosed Manhole Box is a reliable tool designed to boost safety and efficiency in trenching operations. Built for durability and ease of use, it provides additional enclosed support to protect workers during excavation projects and around areas that require secure access.

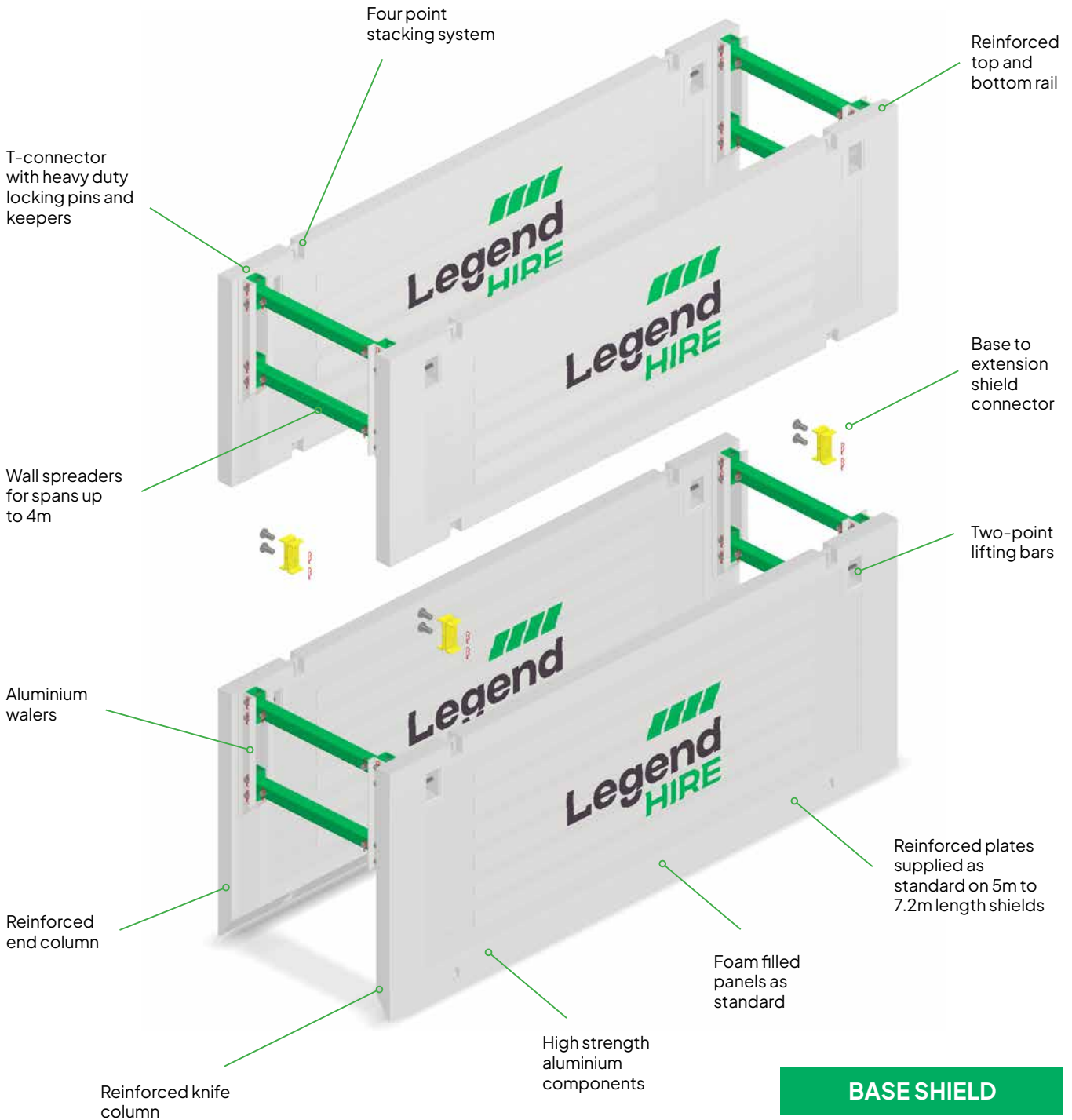
This trench safety equipment expands the protected area around manholes and trenches, and removes the need for extra steel plates. Ideal for stormwater and sewer pits, it enhances work area stability while simplifying your setup and reducing labour—making it a practical choice for challenging excavation sites.



Dimensions (m)	Panel Thickness	Weight (2 x Panels) Kg	Pipe Clearance (m)	Length Between Spreaders	Shield Capacity (kPa)	
					Triangular Loading	Uniform Loading
Lower - 2.5 x 2.5	100	1080	1.3	2.2	130	120
Upper - 2.5 x 2.5	100	860	0.7	2.2	100	80

LEGEND ALUMINIUM SHORING BOX

EXTENSION SHIELD

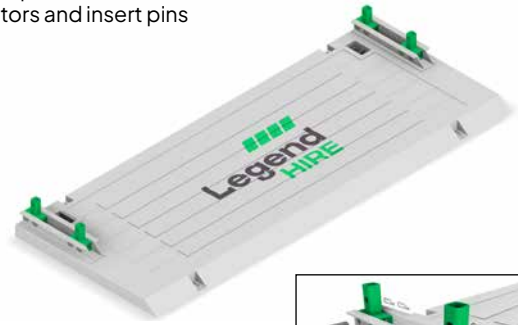


LEGEND ALUMINIUM SHORING BOX ASSEMBLY GUIDE

Lay both side panels on the ground



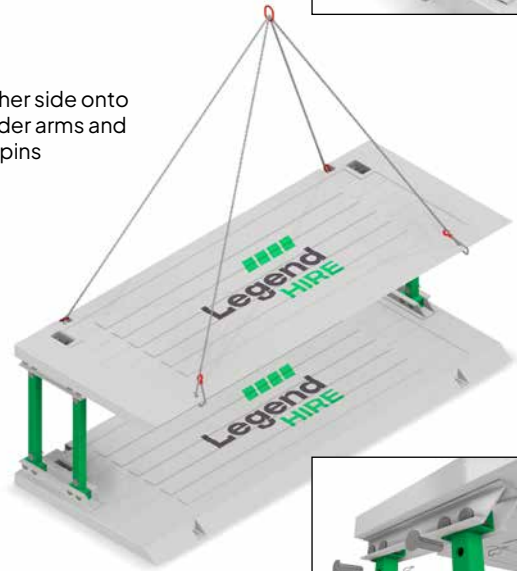
Position spreader arm connectors and insert pins



Add spreader arms to one side and insert pins



Lift other side onto spreader arms and insert pins



Lift and rotate shield



Insert completed shield into position



LEGEND STEEL SHORING BOX

LEGEND Steel Trench Box

Legend Hire's rugged steel trench boxes are engineered to perform across a wide range of light to mid-weight shoring jobs. Available in 2m, 3m, 4m, 5m and 6m lengths, and compatible with a broad variety of struts, these steel boxes are a go-to solution for contractors needing reliable, adaptable protection.

Each unit is built with modular upper and lower panels that can be connected to reach greater depths, giving you the flexibility to scale for more demanding excavations. The knife-edge design makes it easy to dig and push through loose, sandy soils, while the foam-filled panels help keep water out—adding durability where it counts.



STEEL SHORING - BASE BOX (LOWER)

Dimensions	Panel Thickness	Weight (2 x Panels) Kg	Pipe Clearance (m)	Length Between Spreaders	Shield Capacity (kPa)	
					Triangular Loading	Uniform Loading
Plumber's Box 2.2 x 1.2	70	430	0.6	1.775	45	30
2.4 x 2.4	100	2180	1.2	1.825	127	112.5
3.0 x 2.4	100	2520	1.2	2.4	110	97.5
3.6 x 2.4	100	2840	1.2	3	82	70
5.0 x 2.4	100	3690	1.2	4.2	50	30
6.0 x 2.4	150	4150	1.2	5.2	60	40

STEEL SHORING - EXTENSION BOX (UPPER)

Dimensions	Panel Thickness	Weight (2 x Panels) Kg	Pipe Clearance (m)	Length Between Spreaders	Shield Capacity (kPa)	
					Triangular Loading	Uniform Loading
Plumber's Box 2.2 x 0.8	70	304	0.335	1.775	70	45
3.0 x 2.0	100	2000	0.9	2.4	200	127.5
3.6 x 2.0	100	2270	0.9	3	145	82.5
4.0 x 1.5	100	2040	0.55	3.4	125	80
4.0 x 2.0	100	2430	0.9	3.4	85	70
5.0 x 2.0	100	3000	0.9	4.2	80	45
6.0 x 1.5	150	2800	0.55	5.2	70	47.5
6.0 x 2.0	150	3440	0.9	5.2	60	35

VERTISHORES

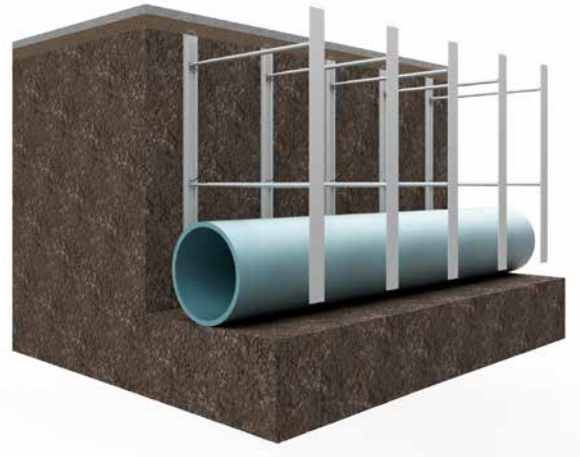
LEGEND Vertishores

Vertishores (Hydraulic Vertical Aluminium Shores) are used to support the sides of a trench and prevent a trench collapse. These lightweight shores can be transported, installed, and removed safely and easily.

The shores are hinged so they can be folded when lowered into the trench and then opened. After opening, it is pressurised using a hydraulic hand pump which prevents cave-ins from happening. The hydraulic fluid is water-soluble, environmentally safe, and biodegradable.

These are typically used in linear trench applications and are installed outside the excavation. This tool is useful for repair and utility work such as sewer and water lines as well as any other projects that require effective spot bracing.

Note: To be used in cohesive soils only.



Model No.	Rail Length (mm)	No of cylinders	Min Width (mm)	Max Width (mm)	Max Depth (mm)
VI050 - 150	1050	2	585	840	2435
VI050 - 300	1050	2	735	990	2435
VI050 - 450	1050	2	890	1150	2435
VI050 - 600	1050	2	1040	1295	2435
VI050 - 750	1050	2	1190	1450	2435
VI050 - 1050	1050	2	1500	1750	2435
VI050 - 1200	1050	2	1650	1905	2435
VI050 - 1400	1050	2	1850	2110	2435
VI525 - 150	1525	2	585	840	2460
VI525 - 300	1525	2	735	990	2460
VI525 - 450	1525	2	890	1150	2460
VI525 - 600	1525	2	1040	1295	2460
VI525 - 750	1525	2	1190	1450	2460
VI525 - 1200	1525	2	1650	1905	2460
VI525 - 1400	1525	2	1850	2110	2460
VI525 - 1050	1525	2	1500	1750	2460
V2100 - 150	2100	2	585	840	3015
V2100 - 300	2100	2	735	990	3015
V2100 - 450	2100	2	890	1150	3015
V2100 - 600	2100	2	1040	1295	3015
V2100 - 750	2100	2	1190	1450	3015
V2100 - 1050	2100	2	1500	1750	3015
V2100 - 1200	2100	2	1650	1905	3015
V2100 - 1400	2100	2	1850	2110	3015

LITEBOX SHORING

LEGEND Litebox Shoring

The lightweight, modular trench support system.

Litebox is a lightweight, modular trench support system designed to provide safe ground support in excavations. It is made up of aluminium panels, adjustable struts, and corner posts that can be configured to suit a wide range of site conditions and excavation layouts.

The modular nature of the system allows it to be assembled on site into two-, three-, or four-sided arrangements, with panels available in various lengths and heights. The system can also be stacked to achieve greater excavation depths of up to max. 5m deep, pending engineering review based on ground condition and surroundings.

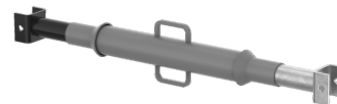
This flexibility enables the box to be adapted to different trench depths, widths, and service penetrations, including situations where pipes or utilities pass through the excavation at varying levels or angles.

The box is usually installed using a dig-and-place method. Due to their low weight, the components can be handled manually or with small excavators, making the system well suited to confined sites, emergency works, and projects requiring rapid installation.



Panels

Available Sizes:
500(H) x 1550mm (L)
500(H) x 2000mm (L)
500(H) x 3000mm (L)



Struts

Available Sizes:
No.1 600-810mm
No.2 800-1210mm
No.3 1290-2180mm



Panel Connectors

Available Sizes:
1350mm
1850mm
280mm

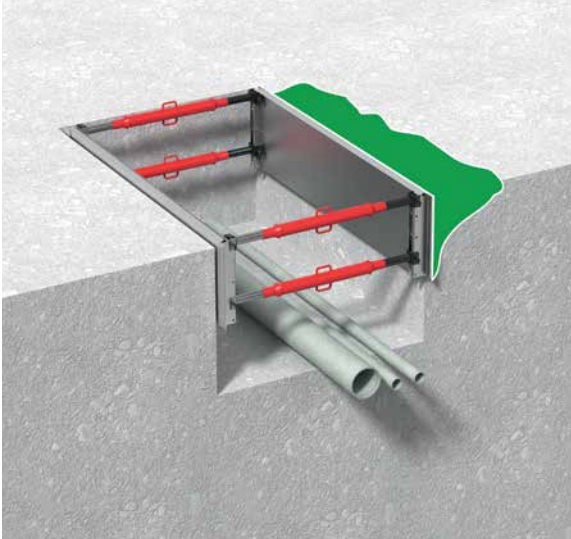


Manhole Corner Profile



Universal Lifting Eye

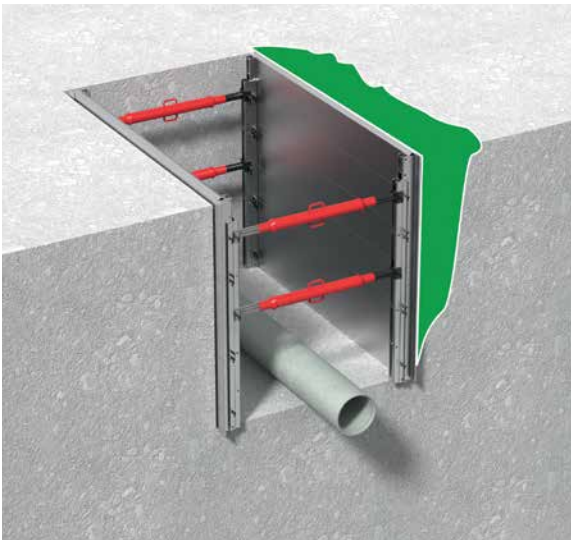
LITEBOX SHORING



LITEBOX ALUMINIUM TRENCH EDGE SHORING

- Partial shoring for securing max. 1.75m deep trenches
- Can be installed by two persons without plant
- Suitable for stiff and cohesive soils as well as rocky ground

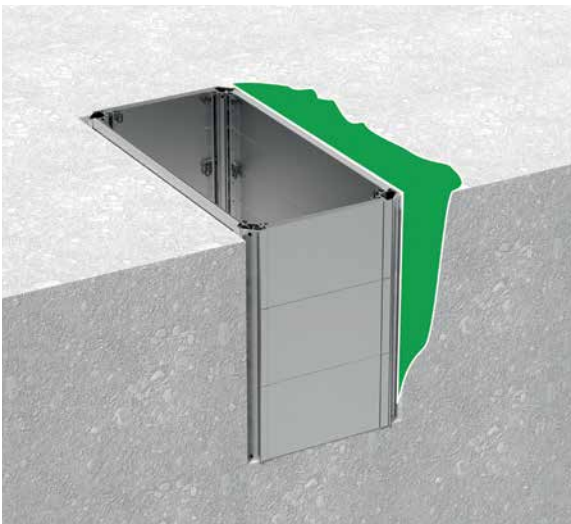
[Download specification sheet](#)



LITEBOX ALUMINIUM TRENCH SHORING

- Sides fully supported
- Can be installed by two persons without plant
- For use in max. 3 m deep trenches (max. 6 m deep also possible)
- Quick positioning, relocation and removal on site
- For soils that are stable for short periods

[Download specification sheet](#)



LITEBOX ALUMINIUM MANHOLE SHORING

- Sides fully supported
- Suitable for use in max. 6m deep shafts
- The solution for jacking and working pits
- For soils that are stable for short periods
- Clear working width: 1.03 – 3.12 m
- Suitable for supporting trench ends

[Download specification sheet](#)

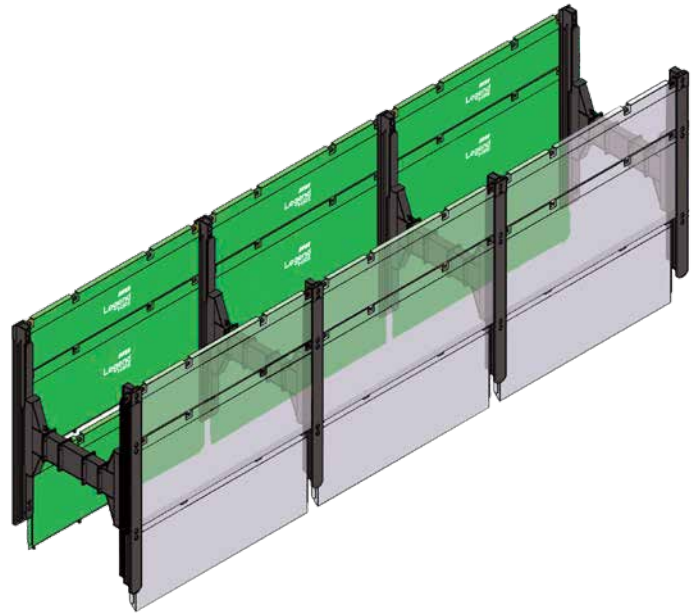
SLIDE RAIL SHORING

LEGEND Slide Rail Shoring

Safe, reliable, and efficient support for deep excavations across a wide range of construction and civil projects.

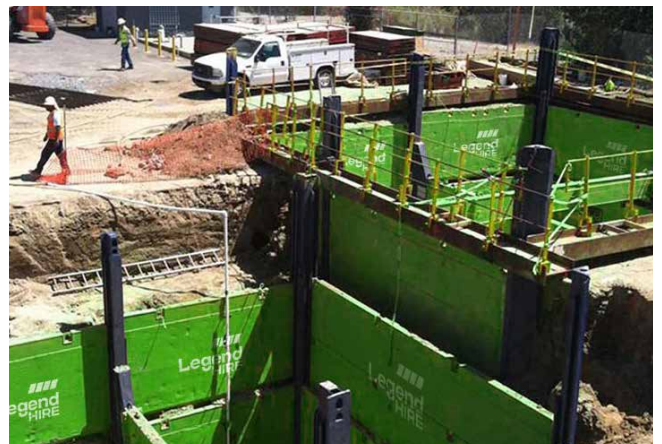
Using modular vertical rails and panels, the system is installed progressively as digging advances, ensuring continuous wall support and minimal soil movement.

Ideal for trenches, pits, vaults, and foundation works, Slide Rail Shoring is perfect for urban or industrial sites, including areas near sensitive structures or in challenging soil conditions. With flexible panel lengths and configurations, our systems can be adapted to meet any project requirement, offering a safer, faster, and more cost-effective alternative to traditional shoring methods.



KEY FEATURES & BENEFITS

- **Modular and Flexible:** Configurable for trenches, pits, and box structures.
- **Safe Excavation:** Panels are installed progressively as digging advances, ensuring continuous wall support and minimal soil movement.
- **Versatile:** Allows configuration to suit various excavation shapes and sizes.
- **Safe and Reliable:** Engineered to reduce the risk of trench collapses.
- **Fast Installation:** Saves time and labour costs compared to traditional shoring.
- **Cost-Effective:** Reusable panels reduce project expenses.
- **Minimal Vibration:** Protects adjacent structures during excavation.



SLIDE RAIL SHORING

KEY INSTALLATION APPLICATIONS

- **Linear Trenches for Utilities** - Supports long trenches for water, sewer, and gas pipelines, adapting easily to different lengths and depths.
- **Bore and Receiving Pits** - Provides stable shoring for pits in directional drilling or boring projects, especially in urban areas.
- **Pump and Lift Stations** - Enables safe excavation for deep, confined installations of pump and lift station equipment.
- **Foundations and Footings** - Maintains wall stability for cast-in-place foundations and footings in varying soil types.
- **Soil Remediation Excavations** - Offers secure support for deep soil remediation works, reducing soil movement and contamination risk.
- **Confined Urban Sites** - Ideal for excavations in tight spaces or near existing underground utilities.
- **Vibration-Sensitive Areas** - Low-vibration installation protects nearby sensitive structures, such as hospitals or historic buildings.
- **Railroad and Roadway Crossings** - Maintains excavation stability under or near active roads and railway tracks.

VERSATILITY

The Legend Hire double slide rail system offers versatile configuration options to suit a wide range of site requirements. Using 3.0 m and 5.5m panels, along with corner and rolling struts, various box sizes can be assembled to meet project needs.



SLIDERAIL PLATES

Plate Length (m)	Plate Height (m)	Thickness (mm)	Pipe Clearance between struts (m)	System Length (m)	Weight (kg)
3	1.4	107	2.8	3.27	495
3	2.4	107	2.8	3.27	770
5.5	1.4	130	5.3	5.77	1170
5.5	2.4	130	5.3	5.77	1850

ROLLING STRUT

Type	Length (m)	Width (m)	Min Working Width (m)	Weight Per RS (kg)
Standard - RS	2.04	0.62	1.24	490
Top Rail - RS	1.25	0.62	1.24	310

ROLLING STRUT - EXTENSION PIECES

Piece	Length (m)	Flange (mm)	Weight (kg)
Standard RS	0.75	405 x 720	237
Standard RS	1	405 x 720	270
Top Rail RS	0.75	405 x 420	159
Top Rail RS	1	405 x 420	187

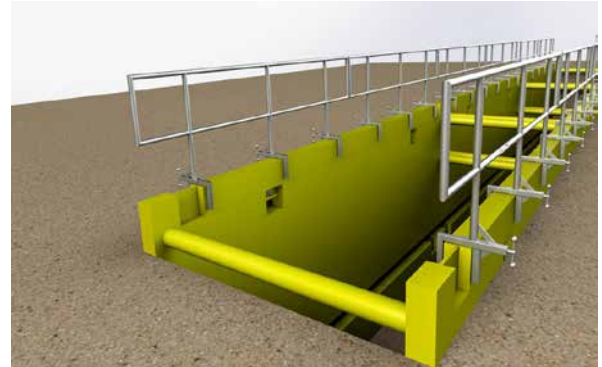
SLIDERAIL POSTS

Type	Rail Length (m)	Weight Per Rail (kg)	Rail Height (mm)
Standard Rail - 750	5.5	1150	375
Top Rail - 750	3	637	375
Corner Rail - 750	5.5	960	430
Corner Top Rail - 750	3	530	430

TRENCH SAFETY

Handrail System

Modular hand rail assemblies that fasten onto every Legend Hire shoring system. Each kit delivers a full three-rail barrier plus kick-board, giving you continuous protection around all walkways.



Ladder Access Platform

A heavy-duty AS compliant work platform that bolts directly onto Legend Hire shoring panels. It's fitted with a three-rail guard system and toe-board, plus a self-closing safety gate and built-in ladder receiver—so you've always got a controlled side entry.



Portable & Adjustable Stairs

- 600mm or 1200mm wide aluminium portable stairs
- Portable stairs will self-level to suit the angle of the batter
- Multiple stairs can be joined end to end to span any batter length
- Top and mid landings can be constructed from Proscaf or custom aluminium fabricated
- To fix, the portable stairs can be bolted into a timber sleeper or structural ply at the top, and pinned into the dirt at the bottom
- Adjustability of the portable aluminium stairs makes them ideal for excavation access, where levels are constantly changing
- Use AdjustaStairs instead of a ladder for your primary or secondary access



TRENCH SAFETY

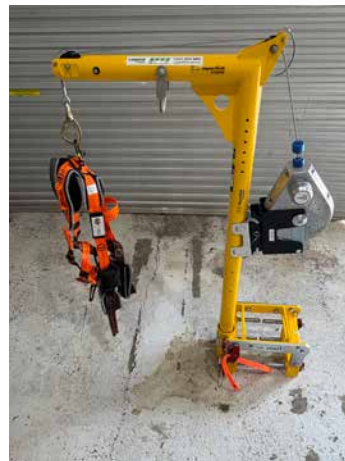
Ladder Access Ramp

An ergonomic incline module that integrates into our edge-protection setup. It pivots through a 30° range, and arrives complete with handrails and toe-boards for smooth, ladder-free traffic between deck levels.



Ladder

Load-rated, AS/NZS-certified ladders sized to suit Legend Hire's access platforms and trench shields. They feature non-slip rungs and lock into place for safe trench access.



Davit Arm

A quick-adjust anchorage arm built for fall-arrest and rescue duty on Legend Hire shoring systems. Meets all AS codes and standards.

Gas Monitor

The GX-3R Pro is the world's smallest 5 gas monitor weighing only 129 grams and fits in the palm of your hand (73 W x 65 H x 26 D mm). It simultaneously monitors and displays 5 different gases. In addition to monitoring standard confined space gases, LEL, O₂, CO, & H₂S, the GX-3R Pro has a 5th channel where you can add infrared or toxic gas sensors. Two of the four sensor slots have interchangeable sensors providing flexible configurations, which can easily be changed in the field.



TRENCH SAFETY

Harness

A premium, full-body harness engineered to AS/NZS 1891.1. It locks seamlessly into Legend Hire davit arms or approved anchor reels, sports quick-connect buckles, adjustable torso and leg straps, plus energy-absorbing lanyard attachments.



Tripod Kit

The 3 Way Inertia Reel/Recovery Winch is a combination unit that operates as a normal inertia reel, but can also be used as a raising and lowering winch. This enables the user to work at ease in "Free Movement Mode" and also be able to be winched out in a rescue application. Can be fitted to davit arm or tripods.

Kit Includes : 7 ft. Lightweight Tripod and Tripod Bag, Full Body Confined Space Harness, Spreader Bar, 2x Karabiners, 3 Way Winch for 7ft Tripod



Fall Arrest/Lifting Gantry

- 1000Kg Goods lift or 2 person fall arrest system
- Pivoting and height adjustable legs allow for use on uneven or unlevel ground up to maximum of 1100mm height difference between legs.
- Easily assembled by two persons in under 10 minutes with no need for tools or additional fasteners.
- Adjustable span (1.7m – 3.3m) with beam drilled to fit retrieval winch assembly at either end.
- Supporting accessories : Harnesses, Retrieval winch, Fall arrest block, Material Trolley, IT Chain Block



TRENCH SAFETY

Lifting Chains

Legend Hire provides a complete selection of lifting chains and compatible connectors designed to seamlessly integrate with our full range of equipment—especially our shoring solutions.

Featuring a wide assortment of hooks and connectors, our lifting chains support multiple chain and sling configurations, offering versatile, multi-directional lifting capabilities that enhance safety without sacrificing strength.

Crafted from premium-grade materials, Legend Hire's lifting chains are engineered for durability, wear resistance, and optimal performance under load. We stock 8mm, 10mm, and 13mm lifting chains in single-leg, two-leg, and four-leg configurations, with multiple component variations and load capacities to suit a range of onsite lifting requirements.

Grade 8 alloy-steel lift chains, AS 2321 certified, each stamped with its WLL and traceable batch ID.



Axial Blower Fan

240V axial blower fan, lightweight and durable, ideal for confined spaces. Features high airflow, safety grille, carry handle, rugged feet, bright orange coating, and 12" flange.



Utility Pipe Laser

The TP-L6 pipe laser's smaller size, long-life battery, and convenient mobile app for Android devices make the new unit one of the most flexible on the market. Field crew members are able to spend less time physically entering manholes to make adjustments, thereby increasing safety. The mobile app puts the user in control remotely to visually assist with configuring settings and making adjustments.

One fully charged battery can last for the whole week. Plus the same multi-use battery can power a variety of other Topcon equipment on active job sites.

The TP-L6 is ideal for contractors that lay pipe required to be at specific slopes as well as projects involving trenching, sewers, mining, and tunneling.

- 60-hour battery life
- Compact design adds flexibility to setup in a tighter inverts
- Mobile app remote display makes seeing and adjusting settings easier
- Less time climbing down into manholes and trenches
- Multi-use battery powers a variety of other Topcon job site equipment



TRENCH SAFETY

Steel Plates

Steel Road Plates are highly versatile and can be used across a wide range of applications, including driveway access, trench bridging, ground stabilization, end shoring panels, and much more.

Legend Hire carries one of the most extensive selections of steel plate sizes available in Australia. Most of our plates feature an anti-slip coating, ensuring maximum safety and reliability for your worksite.

Each steel plate from Legend Hire comes fitted with a central lifting point, allowing for fast, safe, and efficient placement and removal. This built-in feature eliminates the need for manual handling or the use of crowbars during lifting operations.



**Complete our fast & easy
online account application**

**Online applications
approved fast.**

- Hire on 30 days terms and get the products you need, when you need them.
- Apply online in 5-10 minutes.
- Receive a response in 48 hours.



TEST PLUGS

Low Pressure Bypass Plug

Durable and rugged in design, they perform reliably across residential, commercial, and municipal applications. Ideal for installation, repair, and maintenance, low pressure bypass plugs provide a safe and effective solution for testing and managing almost any type of pipe system.



Model No.	Diameter (mm)	Size Range (mm)	Length (mm)	Weight (kg)	Required Inflation Pressure (PSI)	Max Allowable Back Pressure Air (PSI)	Max Allowable Back Pressure Air (m)	Bypass Size	Pipe Size
4.0" - 8.0"	97mm	100-200mm	559mm	3.2kg	40psi	15	13.7	2.0"	4.0
						15	12.2		6.0
						15	10.7		8.0
5.5" - 10.5"	140mm	150-275mm	559mm	5.9kg	40psi	15	13.7	3.0"	6.0
						15	12.2		8.0
						15	10.7		10.0
7.0" - 12.5"	165mm	175-325mm	559mm	8.2kg	40psi	15	13.7	4.0"	8.0
						15	12.2		10.0
						10	10.7		12.0
9.0" - 16.0"	216mm	225-400mm	559mm	11.8kg	40psi	15	13.7	6.0"	10.0
						15	13.7		12.0
						10	10.7		16.0
10.5" - 18.0"	254mm	275-450mm	559mm	15.4kg	40psi	15	12.2	6.0"	12.0
						15	10.7		15.0
						10	9.1		18.0
14.0" - 21.0"	343mm	350-550mm	610mm	20.9kg	40psi	15	12.2	6.0"	15.0
						15	10.7		18.0
						10	9.1		21.0
16.5" - 24.0"	406mm	425-625mm	622mm	27.2kg	40psi	15	12.2	6"	18.0
						15	10.7		21.0
						10	9.1		24.0
16.5" - 24.0"	406mm	425-625mm	622mm	27.2kg	40psi	15	12.2	Various	18.0
						15	10.7		21.0
						10	9.1		24.0
16.5" - 30.0"	406mm	425-775mm	1041mm	43.1kg	40psi	15	12.2	Various	18.0
						15	10.7		24.0
						10	9.1		30.0
22.0" - 36.0"	406mm	550-950mm	546mm	58.9kg	40psi	15	12.2	Various	24.0
						15	10.7		30.0
						10	9.1		36.0
34.0" - 48.0"	406mm	850-1250mm	838mm	97.5kg	40psi	10	7.6	Various	36.0
						8	7.6		42.0
						5	6.1		48.0
46.0" - 60.0*	406mm	1150-1550mm	1143mm	147.3kg	40psi	8	6.1	Various	48.0
						8	6.1		54.0
						5	16		60.0

TEST PLUGS

Low Pressure Blocking Plug

Cherne Test-Balls now feature patented Rupture Disc Technology, designed to prevent over-inflation and protect the plug's internal cording from damage.

Cording damage is often hidden but can significantly reduce plug performance—Rupture Disc Technology helps eliminate this risk.

- **Multi-Size Design:** Greater flexibility with fewer inventory requirements
- **Patented Field-Repairable Rupture Disc Technology:** Built-in protection with easy on-site repair
- **Standard Schrader Valve:** 1/4" tire valve included on every plug
- **Removable Valve on Large Plugs:** Allows quick repairs or replacement with disconnect fittings
- **Flexible Construction:** All Test-Balls bend up to 90° for versatile use



SPECIFICATIONS

Model No.	Diameter (mm)	Size Range (mm)	Length (mm)	Weight (kg)	Required Inflation Pressure (PSI)	Max Allowable Back Pressure Air (PSI)	Max Allowable Back Pressure Air (m)
3.5" - 4.5"	90mm	90-125mm	140mm	0.67kg	25	10	7.6
5.0" - 6.5"	125mm	125-175mm	152mm	1.4 kg	25	10	7.6
8.5" - 10.0"	200mm	225-265mm	254mm	3.6kg	20	10	7.6
11.0" - 12.5"	275mm	275-325mm	305mm	5.6kg	20	10	7.6
13.5" - 15.5"	350mm	350-400 mm	381mm	10.9kg	25	10	7.6
16.5" - 18.5"	425mm	425-470mm	457mm	15.5kg	25	10	7.6
18.5" - 21.5"	475mm	475-550mm	533mm	19.1kg	20	8	6.1

Inflation Hose with Gauge

All test plugs must be inflated and deflated remotely via an inflation hose to ensure safe operation.

The hose length is critical for safety, allowing operators to remain outside the danger zone during both inflation and deflation. For added convenience, 12V Air Compressor can also be supplied to assist with plug inflation on-site.

- Dampened gauge: helps prevent "peg-out" damage
- Heavy-duty rubber gauge cover protects gauge face
- 3/8" ID hose for quick inflate/deflate
- Quick-dump valve for easy deflation
- Quick disconnect design for easy installation
- Designed for use with plugs with removable inflator valve and eye bolt



TEST PLUGS

Test Plug Hand Pump

Heavy-duty hand pumps with built-in pressure gauges are available for inflating small-diameter plugs.

Air-Max™ Test Pump

- Gauge raised from base for protection
- Durable Steel Barrel
- Textured steel base prevents pump from slipping
- Durable, no-kink hose



Air-Max™ Pro HV Test Pump

- Larger barrel diameter – fewer strokes per inflation
- Contoured solid wood handle
- Forged steel construction for extra toughness
- Gauge with molded rubber cover
- Traditional metal thumb lock
- 3' hose with strain-relief

12V Compact Air Compressor

A 12V compressor is a convenient and reliable air supply solution, ideal for on-site applications and mobile use. Simply connect to a 12-volt vehicle battery for powerful performance, delivering up to 112 litres per minute of free air.

Built with a compact design and equipped with a regulator and twin quick-release sockets, this compressor is perfect for inflating test plugs, powering tools, or handling general inflation tasks in the field. Durable and efficient, it's a practical choice for both professional and recreational use.

- Ideal for 4x4s
- Built-In Regulator With Twin Air Fittings
- Regulator Controls The Flow Of Air That Passes Through the System
- Compact 5 Litre Tank
- 12 Volt Battery Set-Up
- 50 Amp Power Draw



Litres Per Minute	112LPM
Power Draw	50 Amps
Cylinders	Single
Volts	12V
Air Tank Size	5 Litres
Pressure Switch	Taiwanese Sunny Pressure Switch
Maximum PSI	125PSI
Working Pressure	85-125 PSI
Pump Type	Piston Pump



ROAD SAFETY HIRE

Concrete Crash Barriers	28
Water Filled Crash Barriers	29
Crash Cushions	30
Anti-Gawk Screens	31
Water Filled Pedestrian Barriers	32
Ground Access Mats	32
Rumble Grids	33
Road Plates	34
Site Exit Mats	34
Sound Cushions	35

CRASH BARRIERS

Deltabloc Concrete Barriers

The Deltabloc DB80 is an F-shape steel reinforced MASH approved concrete barrier. With the patented Deltabloc coupling system, the DB80 allows a slight tilting of the impact energy in case of a heavy impact. Elastomer bearings between the single barriers ensure controlled damping of peak loads. This guarantees reliable breakthrough prevention for heavy vehicles and soft impact behaviour for small cars. Approved for road use up to 100km/hr in NSW and VIC and 80km/hr in QLD and WA, the Deltabloc DB80 concrete jersey barrier can reduce the risk of a head-on collision as a result of an out of control vehicle crossing over the median strip into oncoming traffic.

FEATURES

- 2 metre length
- Rated to 100km/hr in NSW and VIC and 80km/hr in QLD and WA
- Weighs 600kg per metre
- Easy coupling design
- Can be bolted or pinned in place
- This PCB or precast barrier is compatible with popular crash cushions including the TAU-II and Absorb350

APPROVALS

- MASH Tested to TL-3, and are approved for use by Austroads on roads up to 100km/hr.
- Approved by NSW RMS, QLD Main Roads, VicRoads, WA Main Roads up to 80km/hr

Length	2m	4m	6m
Height	80cm	80cm	80cm
Weight	1200kg	2400kg	3600kg
Material	Concrete	Concrete	Concrete

ALSO AVAILABLE

- Bolt down plates
- Steel mesh panels for safety
- Shadecloth or printed fence fabric



CRASH BARRIERS

Lo-Ro Water Filled Barrier

The Lo-Ro is a water filled barrier with a MASH rating of TL-1 and TL-2 (70km/hr). It has a stout design for maximum durability, and has the best TL-2 deflection in its class in the Australian market, plus shorter clear zones and shorter minimum length. Red unit (also available in white).

FEATURES

- **Sturdy & Stable:** Designed for maximum durability with low deflection.
- **Enhanced Safety:** Reduces clear zone needs, improving worker protection.
- **Urban-Friendly:** Low profile boosts motorist visibility.
- **Lowest Deflection:** MASH TL-2 water-filled barrier at just 3.6m.
- **Certified End-Treatment:** SLED Lo-Ro meets MASH TL-2 standards.
- **Secure Connection:** Interlocking knuckles prevent rotation.
- **Reinforced Protection:** Three galvanized steel cables limit penetration.
- **Versatile & Freestanding:** No anchoring needed; suitable for various surfaces.
- **Easy Storage & Transport:** Molded stacking lugs included.
- **Durable Materials:** Energy-absorbing plastic shell resists cracking/corrosion.
- **Impact Response:** Modules collapse, rupture, and disperse water safely.
- **Convenient Filling:** Large 200mm opening with twist-lock lid for secure sealing.

APPROVALS

- MASH TL-1 and TL-2
- Rated Speed: MASH 50km/hr TL-1 and 70kph TL-2
- Dynamic Deflection: 1.8m TL-1 & 3.6m TL-2
- Complies with AS/NZS 3845
- Austroads approved
- Approved for use by NSW RMS, QLD TMR, VicRoads, Main Roads WA, SA DPTI and NT DIPL



MASH Tested	TL-2 70km/hr
Deflection	3.6m
Weight	72.58kg when empty
Weight	726kg when full
Length	1924mm (pin to pin)
Length Overall	2096mm
Width	572mm
Height	876mm
Colour	Red
Other	200mØ hole at top for water filling

CRASH BARRIERS

Absorb M Treatment < 80km/hr

The ABSORB-M is a non-redirective, gating, freestanding crash cushion designed to shield the blunt end of concrete barriers. Featuring water filled elements and tension straps to absorb vehicle impact energy, the ABSORB-M does not require ground anchors making it the preferred crash cushion solution for work zones where the unit can be rapidly deployed, relocated and retrieved.

FEATURES

- Accepted by the Austroads Safety Barrier Assessment Panel (ASBAP).
- Complies with AS/NZS 3845.1 Road Safety Barrier Systems & Devices.
- Universal transition conforms to most concrete barrier shapes.
- Complies with MASH TL2 & TL3.
- MASH TL2 unit is restricted to speed zones of up to 60km/h
- MASH TL3 unit is restricted to speed zones of up to 80km/h.



Width	670mm
Length (60km)	4.46m
Length (80km)	6.39m

TAU-XR

Xpress Repair Cushion - 100km/hr

The TAU-XR is a MASH TL3 compliant crash cushion designed to shield the blunt ends of concrete barriers and other hazards. The TAU-XR is classified as a Low Maintenance Crash Cushion, providing rapid repair & reusability of components following design impacts. This is an important design consideration for installation on high traffic volume roadways and hazardous locations.

FEATURES

- Complies with MASH TL3.
- Complies with AS/NZS 3845.1 Road Safety Barrier Systems & Devices.
- Non-gating, fully re-directive.
- Crushable aluminium tubes absorb impact energy.
- Rapid repair following design impacts.
- Units are supplied pre-assembled, facilitating rapid installation.
- Can be secured to concrete or asphalt.



ANTI-GAWK PANELS

Lo-Ro Anti-Gawk Screen

The Lo-Ro anti-gawk screen to suit Lo-Ro water filled crash barriers. Fits easily to the Lo-Ro barrier to provide a more thorough protection around the work site. With the addition of the fence panels, these barriers provide good protection for temporary worksites and other miscellaneous roadside activities.



Length	1965mm
Height	1200mm
Weight	20kg per panel

Anti-Gawk Screen for Concrete Road Barrier

Mesh panels commonly known as anti-gawking screens are used on civil work sites and construction sites to reduce the visibility of the site's activities to the general public and to pedestrians or vehicles passing by. Reducing visibility on roadside work zones provides safety for road users. Drivers often become distracted by roadwork and this can lead to a hazardous situation for both drivers and workers. Anti-gawk screens can also play an important role in promoting your business, brand or project, with the use of printed banner mesh or shade cloth which is easily attached to the mesh panels



Length	6m
Height	1100mm

PEDESTRIAN BARRIERS

TRAFIX 2000 Water Filled Pedestrian Barriers

Simple and lightweight alternative to crash barriers for pedestrian applications. Easy install when empty, each module weighs just 18kg before filling. Once filled with water, each barrier weighs 220kg, providing a significantly stable and secure barrier made from material that is strength tested to Australian Standards.

Rounded corners make it safe and easy for workers to handle, and a simple interlocking pin and hole system is moulded into each barrier module, resulting in a one-piece unit with no loose pins. Built-in handles help with the interlocking process and carrying the barrier when empty.

It is ideal for use in pedestrian delineation applications such as this, as well as for cordoning off no-go zones, drop-offs and pits on work sites. Lights and signage can also be attached, transforming the barriers into a 24 hour traffic control product.

FEATURES

- 70mm filler, overflow and 50mm drain centrally located
- Material strength tested to AS/NZS 4766:2006
- Recommended for carparks, worksites and pedestrian delineation
- Light bracket moulded on top of barrier
- Strong and user friendly
- No loose pins
- Weighs 18kg empty, 220kg full



Length	2100mm
Height	900mm
Width	500mm
Weight Empty	18kg
Weight Full	220kg
Material	Polyethylene
Colour	Red & White

Versadeck™ Access Mat

Over mud, sand, turf, or sensitive sites, whatever the ground conditions, VERSADECK® access mats will reduce damage to your equipment and the environment from recovery efforts, while increasing the safety and efficiency of your staff. No more delays from vehicles bogged on soft ground, or time wasted with site remediation after the project is done, VERSADECK® trak mats will become an indispensable part of your operation.

Whether you are in mining, exploration, utilities, heavy lifting, landscaping or construction, there is a size to suit your application, with features and outstanding performance to keep you moving year after year. These mats are the choice of professionals world-wide.

FEATURES

- Light weight: Makes them easy to handle.
- High load bearing: Supports heavy vehicles weighing up to 80-100t*.
- Superior Traction: Large checker tread pattern.
- Ergonomic Design: 6 handle holes – 2 on each side, 1 on each end.
- Compact size: Easy maneuvering & storage.
- Safety yellow colour: Reduced turf scorch
- Storage frames available: Allows for safe, tidy stacking and easy transport onsite.



Size / Weight	2m x 1m / 26kg 2m x 0.6m / 18kg
Load	80-100t*
Colour	Safety Yellow
Material	Tufflene
Class	Heavy Duty

ACCESS MATS & RUMBLE GRIDS

Samson™ Composite Mat

Designed for heavy duty applications, the SAMSON™ composite matting system will meet the demands of the drilling, energy, transmission, and civil construction industries.

Manufactured using unique 'hot-melt' technology, our SAMSON™ mat offers superior strength and durability, while eliminating the possibility of environmental contamination from micro plastics. SAMSON™ mats join seamlessly with a rugged overlapping flange, ensuring a very high load bearing capacity. Their pins and dimensions enable SAMSON™ mats to be interlocked with some other brands of mats, providing uniformity on site.

APPLICATIONS

- Construction: Withstand high point loads and provide a stable, reliable base for heavy machinery, cranes, and vehicles on soft or uneven ground
- Exploration & Mining: Maintain access in remote or challenging terrain while protecting sensitive environments.
- Transmission & Utilities: Ideal for long corridors and access tracks, offering strong ground support, traction, and protection during pole or line work.
- Events & Temporary Access: Create clean, safe walking and driving surfaces on turf, sand, or synthetic ground for events, public access, or emergency works.
- Heavy Duty Roadways: Instantly deployable roadways for trucks and machinery over soft, wet, or sensitive ground conditions.
- Ground Protection: Preserve turf, sports fields, and delicate surfaces during construction, lifting, or high-traffic events.
- Parking Lots & Staging Areas: Provide secure, load-bearing zones for storing equipment, materials, and heavy vehicles.
- Working Platforms: Create smooth, seamless, and hygienic surfaces for safe personnel movement and plant operation.



FEATURES

- Overlapping Flanges: Seamless load transfer between mats, improving ground coverage and reducing trip hazards.
- Cam Lock Connection System: Fast, secure and tool-assisted locking for safe deployment.
- Compact for Transport: Easily stacked and efficiently transported to reduce freight costs and handling time.

Module Size (Actual)	2.40m x 4.18m x 10.5cm
Module Size (Useable Platform)	2.10m x 3.89m
Module Weight	472kg
Weight Loading	650psi
Flame Resistance	UL94

Rumble Grids

With its innovative design the rumble grid allows for effortless cleaning of a wheel in just one full rotation, saving valuable time and effort. Built to withstand an impressive 18 tonnes per axle, constructed with the highest quality materials, guaranteeing long-lasting performance. Measuring 4000mm long x 2000mm wide x 200mm high, the Rumble Grid provides ample space for thorough cleaning.



Length	4m
Width	2m
Load Rating	18T per axle

ROAD PLATES & SITE EXIT MATS

Road Plates

Engineered for versatility and safety, making them ideal for various construction and infrastructure projects. Provided lifting holes allow for easy lifting and placement with corner deck pin holes for secure placement. Manufactured and certified to meet Australian Standards, these road plates offer reliability and durability.

FEATURES

- With anti-slip surface
- Edge and centre holes for lifting
- Deck pin holes in corners
- Ideal for covering trenches & road excavations to allow vehicle access



Length	1220mm	2440mm	3000mm	3000mm	3000mm	4000mm	4000mm
Width	1220mm	1220mm	1220mm	1800mm	1800mm	1800mm	1800mm
Height	25mm	25mm	25mm	25mm	32mm	25mm	32mm
Weight	283kg	566kg	707kg	1060kg	1356kg	1413kg	1809kg
Material	Steel	Steel	Steel	Steel	Steel	Steel	Steel
Colour	Black	Black	Black	Black	Black	Black	Black

ALSO AVAILABLE

- Road Plate Lifter



Diamond Track Site Exit Mats

A cost-effective alternative to rock & Rumble bars in construction site entrances & exits. DiamondTrack™ mats feature a distinctive diamond-shaped profile, delivering unparalleled strength, durability, and effectiveness, in tire deformation and sediment dislodgement.

Fast & easy to install, & simple to transport, DiamondTrack™ mats save tons of contaminated rock going to landfill, compared to using traditional construction site entrances. No excavation is required for installation, and cleaning quickly restores the effectiveness to its original condition.

FEATURES

- High-Density Polyethylene (HDPE) with special impact modifiers
- Diamond pyramids
- Joining holes



Size	2.13m x 3.66m (7.80m ²)
Thickness	9.53cm
Weight	197.3kg
Colour	Safety Orange

SOUND CURTAINS

SOUND QUILT

Soundproof Curtains

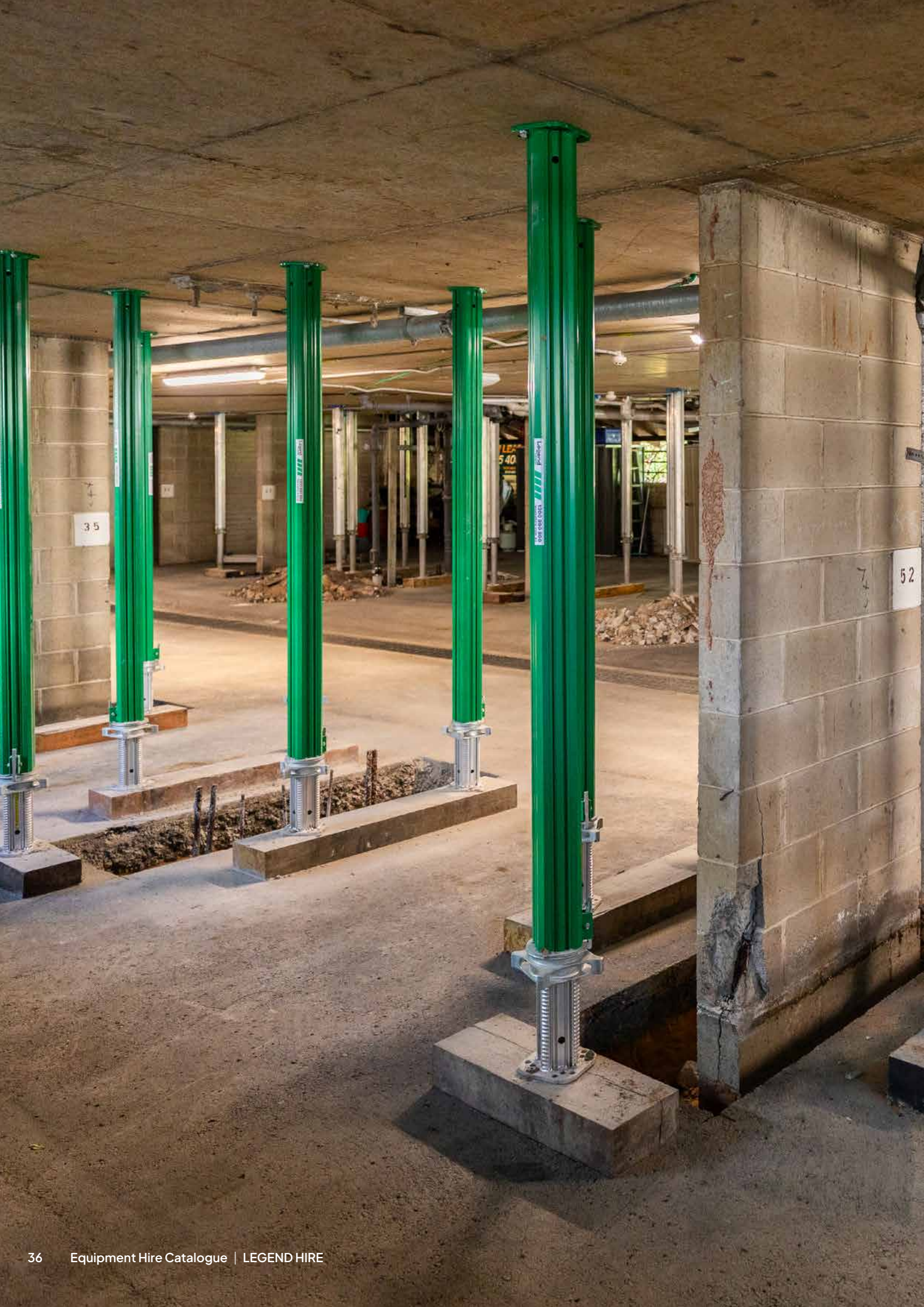
Acoustic sound barrier curtains offer a cost-effective solution for reducing airborne noise, with up to 24dB noise reduction. Made from layered noise-dampening materials, they are durable, lightweight, and easy to install. Velcro strips and eyeleted hems allow panels to clip together, forming a solid barrier suitable for fencing, hoarding, scaffolding, and other construction structures. Commonly used to protect pedestrians, nearby residents, and workers from noise during construction or in high-traffic, noisy environments.

FEATURES

- 24dB noise reduction (average)
- Noise reduction coefficient (NRC) of 0.80 in absorption test
- Easily transported between construction sites
- Quick and easy to erect
- Waterproof and UV resistant material
- Robust and durable fire resistant construction
- Versatile – can be installed indoors and outdoors
- Also effective in controlling dust & fumes
- Vision panels and access doors can be incorporated



Length	2000mm
Width	1300mm
Weight	Approx. 8kg each



35

52

PROPPING HIRE

Titan Props	40
Legend Multi Props	42
Legend 10T Props	44
Legend 50T Props	47
Legend 100T Props	50
Propping Accessories	53
Power Pole Brace	56



OUR SERVICES

Engineering (Temporary Work Solutions)

Legend Hire are specialists in Temporary Works Design with expert temporary works solutions for projects ranging from residential developments to government funded super projects.

Our in-house team of engineers is accredited with Engineers Australia (CPEng), the Board of Professional Engineers of Queensland (RPEQ), offering certified designs for shoring, propping, traffic, hydraulic jacking and stringing & winching. We collaborate with contractors, stakeholders, and construction teams to deliver tailored, efficient, and cost-effective solutions.

By integrating our cutting-edge products with practical construction methodology, we optimise material selection, site constraints and equipment availability ensuring seamless project execution.

Our expertise covers:

- **Structural Propping**
- **Hydraulic Jacking and Lifting**
- **Complex ground shoring systems**
- **Traffic road plate design**
- **Stringing & Winching**

At Legend Hire, we prioritise safety, efficiency, and innovation, delivering high-quality engineering solutions with fast turnaround times. Whether for major contractors or small builders, we are committed to supporting projects from concept to completion.

Rigging & Installation

Legend Hire provides a comprehensive rigging and installation service for our entire propping range, including synchronized jacking and lifting solutions. With a team of fully qualified installers, we collaborate closely with project engineers, key stakeholders, and our in-house specialist engineers to deliver a complete suite of Temporary Works Solutions (TWS), from initial concepts to fully certified designs.

Our skilled installation team ensures a safe, efficient, and reliable service, consistently delivered on schedule to meet the highest standards.

From feasibility assessments during the tender process to project coordination, scheduling, and installation, we work side by side with our clients to provide innovative, tailored solutions that contribute to the success of their projects. By offering end-to-end solutions for temporary works needs, we have solidified our reputation as a leader in rigging and installation services.



Discuss your requirements with our expert Engineering temporary works team

PROPPING / TITAN PROPS

Titan Props Aluminium Light Weight Props

The Titan Prop is a heavy-duty, high-capacity propping system designed for structural support, falsework, and shoring applications in construction and civil engineering projects. Engineered for strength, durability, and versatility, Titan Props provide exceptional load-bearing capacity, making them ideal for temporary works, bridge construction, and high-rise developments.

APPLICATIONS

- Heavy-duty falsework and propping for concrete structures
- Bridge construction and infrastructure support
- High-rise building construction and refurbishment
- Temporary shoring for excavation and underpinning projects
- Industrial and mining sector structural support

FEATURES

- **Material:** High-strength aluminium for enhanced durability and corrosion resistance.
- **Load Capacity:** Designed for extreme loads, ensuring safe and stable structural support.
- **Adjustability:** Telescopic height adjustment with secure locking mechanisms for precise leveling.
- **Standard Sizes:** Available in various height and load configurations to suit project requirements.
- **Modular Compatibility:** Works seamlessly with falsework systems, shoring frames, and formwork support.
- **Safety Compliance:** Fully meets AS/NZS 3610, AS/NZS 1576, and BS EN 1065 standards.
- **Fast Installation:** Lightweight yet strong, allowing for quick assembly and easy handling on-site.



SPECIFICATIONS

Model No.	Weight (kg)	Length Lower Range(m)	Length Upper Range (m)
No. 2	17	1.7	2.9
No. 3	19	2.4	3.6
No. 4	21	2.9	4.1
No. 6	28	4.3	5.5

PROPPING / TITAN PROPS

FORMWORK

Extensions (m)	No .2 (kN)	No .4 (kN)	No .6 (kN)
1.7	100		
1.9	100		
2.1	100		
2.3	100		
2.5	88		
2.7	57		
2.9	42	94.9	
3.1		79.9	
3.3		70	
3.5		62.4	
3.7		55	
3.9		50	
4.1		41	
4.3			42
4.5			39
4.7			37.1
4.9			33
5.1			31
5.3			28
5.5			27

BACKPROPPING

Extensions (m)	No .2 (kN)	No .3 (kN)	No .4 (kN)	No .6 (kN)
1.7	128			
1.9	128			
2.1	128			
2.3	128			
2.5	115.7	128		
2.7	103.6	128		
2.9	89.1	128	128	
3.1		128	128	
3.3		120.3	126.6	
3.5		96	108.1	
3.7			84.9	
3.9			72.5	
4.1			60.5	
4.3				89.3
4.5				80.5
4.7				71.6
4.9				64.4
5.1				57.1
5.3				49.5
5.5				41.9

PROPPING / MULTI PROPS

Multi Props Aluminium Slab Shoring Props

The Legend Multi Prop is a versatile, high-load-capacity telescopic prop designed for falsework, shoring, and temporary structural support in construction and civil engineering projects. Known for its lightweight yet robust design, the Multi Prop offers quick adjustment, high stability, and modular compatibility, making it an ideal choice for formwork support, slab propping, and heavy-duty shoring applications.

APPLICATIONS

- Falsework and slab propping in concrete construction
- Shoring support for high-rise buildings and infrastructure projects
- Temporary structural support for bridges and heavy civil works
- Excavation and underpinning propping
- Industrial and commercial construction support systems

FEATURES

- **Material:** High-strength aluminium for durability and corrosion resistance.
- **Load Capacity:** Designed for high-load applications while maintaining a lightweight structure for easy handling.
- **Telescopic Adjustment:** Precise height adjustment with a secure locking mechanism for stability.
- **Standard Sizes:** Available in various height ranges (e.g., 0.8m – 6.250m) to suit different project requirements.
- **Modular Compatibility:** Can be used with shoring frames, formwork systems, and falsework structures.
- **Safety Compliance:** Fully meets AS/NZS 3610, AS/NZS 1576, and BS EN 1065 standards.
- **Quick & Easy Installation:** Lightweight and efficient design, reducing assembly time and labour costs.



SPECIFICATIONS

Model No.	Weight (kg)	Length (m)	Max Load (kN)
MP 120	10.1	(L 0.80 - 1.20m)	102
MP 250	15.4	(L 1.45 - 2.50m)	99.3
MP 350	19.4	(L 1.95 - 3.50m)	96
MP 480	24.8	(L 2.60 - 4.80m)	94
MP 625	34.6	(L 4.30 - 6.25m)	57.9

PROPPING / MULTI PROPS

SPECIFICATIONS

MP 120 L = 0.80 - 1.20 m

Extension Length (cm)	Lower Outer Tube (kN)	Lower Inner Tube (kN)
80	89.3	102
90	89	102
100	88.7	102
110	88.7	98
120	88.7	94

MP 250 L = 1.45 - 2.50 m

Extension Length (cm)	Lower Outer Tube (kN)	Lower Inner Tube (kN)
150	99.3	94
160	99.3	94
170	99.3	94
180	97.2	94
190	92.9	94
200	88.7	94
210	86.5	94
220	84.4	94
230	82.5	92.4
240	80.9	89.2
250	79.3	86

MP 350 L = 1.95 - 3.50 m

Extension Length (cm)	Lower Outer Tube (kN)	Lower Inner Tube (kN)
200	96	94.7
210	93.1	94.7
220	90.1	94.7
230	87.5	94.1
240	85.1	93.1
250	82.7	92
260	79.3	88.7
270	76	85.3
280	73.3	82.7
290	70.7	80
300	68.7	77
310	66.7	74
320	63.1	71
330	59.6	68
340	54.7	61.5
350	49.8	54.9

MP 480 L = 2.60 - 4.80 m

Extension Length (cm)	Lower Outer Tube (kN)	Lower Inner Tube (kN)
260	88.7	94
270	87.8	92.3
280	87	90.7
290	86.2	89
300	85.3	87.3
310	80.2	84.9
320	75.1	82.5
330	70	80
340	66.6	77.3
350	63.2	74.7
360	59.7	72
370	56.2	67.4
380	52.8	62.7
390	49.3	58.1
400	46.3	54.1
410	43.3	50
420	40.3	45.9
430	38	43.3
440	35.7	40.8
450	33.5	38.2
460	31.2	35.6
470	28.9	33.1
480	26.7	30.5

MP 625 L = 4.3 - 6.25 m

Extension Length (cm)	Lower Outer Tube (kN)	Lower Inner Tube (kN)
430	57.9	45.7
440	56.3	45.7
450	54.7	45.7
460	52.5	45.1
470	50.2	44.5
480	47.8	43.6
490	45.1	42.5
500	42.4	41.3
510	39.8	39.9
520	37.2	38.5
530	34.9	37
540	32.9	35.6
550	30.9	34.1
560	29.3	32.6
570	27.7	31.1
580	26.3	29.5
590	25	27.9
600	23.7	26.2
610	22.6	24.8
620	21.5	23.4
625	21	22.7

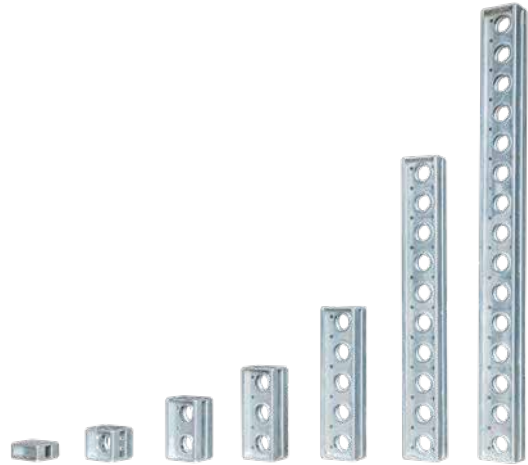
PROPPING / 10T PROP

Legend 10T Prop

The LEGEND 10T Prop is a high-strength, lightweight propping system designed for falsework, shoring, and heavy-duty structural support in construction and civil engineering projects. It offers exceptional load-bearing capacity while being versatile, easy to assemble, and highly adjustable, making it ideal for temporary works, formwork support, and infrastructure projects.

FEATURES

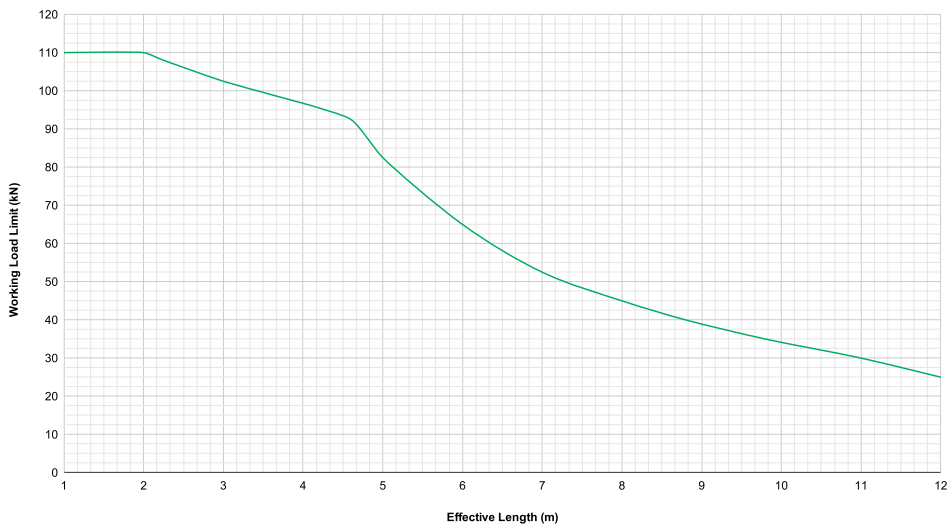
- **Material:** High-strength galvanised steel for durability and corrosion resistance.
- **Load Capacity:** Engineered for medium to heavy-duty propping applications with a high load-to-weight ratio.
- **Adjustability:** Telescopic height adjustment for flexible propping configurations.
- **Standard Sizes:** Available in various heights to suit multiple project requirements.
- **Modular Design:** Compatible with Legend 10t, Legend 100T, and other LEGEND falsework systems.
- **Safety Compliance:** Meets AS/NZS 3610, AS/NZS 1576, and BS EN 1065 safety standards.
- **Quick Installation:** Lightweight yet strong, ensuring easy handling and fast assembly on-site.



APPLICATIONS

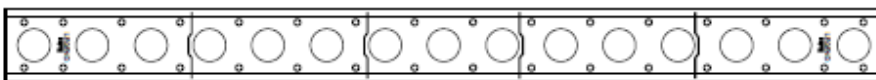
- Falsework and shoring for concrete structures
- Temporary support in high-rise and infrastructure projects
- Bridge construction and refurbishment works
- Excavation and underpinning support systems
- Heavy-duty scaffolding and modular support frameworks

VERTICAL WORKING LOAD LIMIT



Design Considerations:

- Working Load Limit of 1.5 applied
- Props laterally restrained top and bottom
- Eccentricity of L/200 has been applied around the minor axis



LEGEND 10T SECTIONS

Length (mm)	Weight (kg)
90	7.3
180	8.8
360	12.4
540	16
900	22.1
1800	40
2700	55
3600	73

PROPPING / 10T PROP

SPECIFICATIONS

With Single Jack and Foot Jack Adaptor (mm)	Kg	Number of Intermediate Beams Required								Kg	with Top and Bottom Jack and Two Tilt Bases (Raking Prop) (mm)
		90mm	180mm	360mm	540mm	900mm	1800mm	2700mm	3600mm		
450-655	18									38	900-1310
540-745	25.3	1								45	990-1400
630-835	26.8		1							46	1080-1490
810-1015	30.4			1						50	1260-1670
990-1195	34				1					54	1440-1850
1170-1375	42.8			2						62	1620-2030
1350-1555	40.1					1				60	1800-2210
1530-1735	50				2					70	1980-2390
1710-1915	52.5			1		1				72	2160-2570
1890-2095	56.1				1	1				76	2340-2750
2010-2275	64.9			2		1				85	2460-2930
2250-2455	58						1			78	2700-3110
2430-2635	78.4			1	3					98	2880-3290
2610-2815	70.4			1			1			90	3060-3470
2790-2995	74				1		1			94	3240-3650
2970-3175	82.8			2			1			102	3420-3830
3150-3355	73							1		93	3600-4010
3330-3535	90				2		1			110	3780-4190
3510-3715	98.8			2	1		1			118	3960-4370
3690-3895	107.6			4			1			127	4140-4550
3870-4075	106				3		1			126	4320-4730
4050-4255	91								1	111	4500-4910
4230-4435	123.6			4	1		1			143	4680-5090
4410-4615	103.4			1					1	123	4860-5270
4590-4795	107				1				1	127	5040-5450
4770-4975	115.8			2					1	135	5220-5630
4950-5155	113.1					1			1	133	5400-5810
5130-5335	128.2			3					1	148	5580-5990
5310-5515	125.5			1		1			1	145	5760-6170
5440-5695	129.1				1	1			1	149	5890-6350
5670-5875	144.2			3	1				1	164	6120-6530
5850-6055	131						1		1	151	6300-6710
6030-6235	151.4			1	3				1	171	6480-6890
6210-6415	143.4			1			1		1	163	6660-7070
6390-6595	147				1		1		1	167	6840-7250
6570-6775	155.8			2			1		1	175	6570-6775
6750-6955	146							1	1	166	7200-7610
6950-7135	163				2		1		1	183	7400-7790
7110-7315	165.5			1				1	1	185	7560-7970

PROPPING / 10T PROP

LEGEND 10T ACCESSORIES

Accessory	Weight (kg)
End Plate Adaptor & Scaffold Bracket	1.67
Connection Angle	2.14
50-10T Flange Connector	11
Rocking Head	9.7
Strut Adaptor	1.6
Tilt Base	6
Screw Jacks	12.8
Jack Spanner	
Foot Adaptor	5.2
Six Way Connector	25



Tilt Base Foot



Foot Jack Adaptor



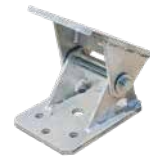
10T Strut Adaptor



Right Hand Base Jack



Left Hand Base Jack



Rocking Head



Jack Spanner

RACKING WORKING LOAD LIMIT

Length (m)	Angle of Racking (°)								
	0°	10°	20°	30°	40°	45°	50°	60°	90°
1	510	510	510	510	510	510	510	510	510
2	435.8	436	436.3	436.9	437.6	438	438.5	439.4	442.8
2.5	377.9	378.2	378.8	379.5	380.6	381	381.7	383	387.6
3	325.4	325.6	326.2	327.2	328.5	329.2	330	331.6	337.3
3.5	285.5	285.8	286.5	287.7	289.3	290.1	291	293	299.9
4	255.1	255.5	256.4	257.7	259.5	260.6	261.6	264.1	272.2
4.5	229.7	230.2	231.3	232.9	234.9	236.1	237.3	240.2	249.7
5	207.1	207.6	208.8	210.7	212.9	214.3	215.7	218.9	229.6
5.5	185.8	186.5	187.6	189.7	192.2	193.7	195.3	198.7	210.6
6	165	165.7	167	169.1	172	173.4	175.2	179	191.9
6.5	144.3	145	146.5	148.7	151.6	153.1	154.9	159	172.5
7	123.5	124.2	125.7	128	130.8	132.5	134.3	138.5	152.2

Design Considerations:

- A rocking head and jack are positioned at both ends and are laterally restrained.
- The working load limit values are the limit state design capacities divided by a safety factor. An axial load eccentricity of L/200 has been applied about the minor axis.
- All assembly bolts are fully tensioned.
- The effective length of the racking prop is taken as the linear distance between the universal tilt bases at both ends.
- For effective lengths greater than 8600 mm, it is recommended that the props be used for wind-loading applications only.

PROPPING / 50T PROP

Legend 50T Prop

The LEGEND 50T Prop is a heavy-duty, high-load-capacity propping system designed for falsework, shoring, and temporary structural support in large-scale construction and civil engineering projects. Engineered for superior strength and stability, the Legend 50T system provides reliable load-bearing support for bridgeworks, high-rise buildings, and industrial infrastructure.

FEATURES

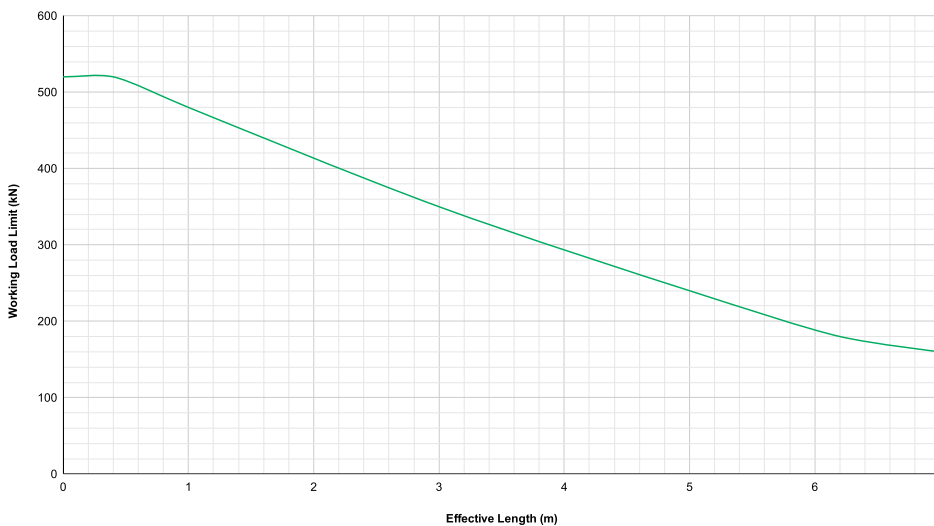
- **Material:** High-strength galvanised steel for durability and corrosion resistance.
- **Load Capacity:** Designed to support extreme structural loads, ensuring stability in demanding applications.
- **Adjustability:** Telescopic height adjustment for precise leveling and flexible propping configurations.
- **Standard Sizes:** Available in multiple height and load-bearing variations to suit project needs.
- **Modular Compatibility:** Works with shoring frames, falsework, and other heavy-duty propping systems.
- **Safety Compliance:** Fully meets AS/NZS 3610, AS/NZS 1576, and BS EN 1065 standards for structural support.
- **Easy Assembly:** Quick and efficient installation, minimizing downtime on-site.



APPLICATIONS

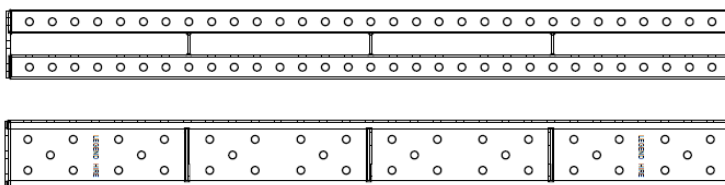
- Falsework support in bridge construction and deck systems
- Heavy-duty propping for high-rise building construction
- Temporary shoring for structural modifications and repairs
- Formwork support in large-scale concrete pours
- Excavation and underpinning support systems

VERTICAL WORKING LOAD LIMIT



Design Considerations:

- Working Load Limit of 1.5 applied
- Props laterally restrained top and bottom
- Eccentricity of L/200 has been applied around the minor axis



LEGEND 50T SECTIONS

Length (mm)	Weight (kg)
125	8
250	11
500	18
1000	30
2000	56

PROPPING / 50T PROP

SPECIFICATIONS

Prop Height Required (mm)	Total Weight (kg)	Legend 50T Jack (400-610mm)	Number of Intermediate Beams Required				
			125mm	250mm	500m	1000m	2000m
400-610	25	1					
525-735	33	1	1				
650-860	33	1		1			
775-985	44	1	1	1			
900-1110	42	1			1		
1025-1235	50	1	1		1		
1150-1360	53	1		1	1		
1275-1485	61	1	1	1	1		
1400-1610	55	1				1	
1525-1735	63	1	1			1	
1650-1860	66	1		1		1	
1775-1985	74	1	1	1		1	
1900-2110	72	1			1	1	
2025-2235	80	1	1		1	1	
2150-2360	83	1		1	1	1	
2275-2485	91	1	1	1	1	1	
2400-2610	80	1					1
2525-2735	88	1	1				1
2650-2860	91	1		1			1
2775-2985	99	1	1	1			1
2900-3110	97	1			1		1
3025-3235	105	1	1		1		1
3150-3360	108	1		1	1		1
3275-3485	116	1	1	1	1	1	1
3400-3610	110	1	1	1	1		1
3525-3735	118	1				1	1
3650-3860	121	1		1		1	1
3775-3985	129	1	1	1		1	1
3900-4110	127	1			1	1	1
4025-4235	135	1	1		1	1	1
4150-4360	138	1		1	1	1	1
4275-4485	146	1	1	1	1	1	1
4400-4610	135	1					2
4550-4760	143	1	1				2
4650-4860	146	1		1			2
4775-4985	154	1	1	1			2
4900-5110	152	1			1		2
5025-5235	160	1	1		1		2
5150-5360	163	1		1	1		2
5275-5485	171	1	1	1	1		2
5400-5610	165	1				1	2
5524-5735	173	1	1			1	2
5775-5985	184	1	1	1		1	2
5900-6110	182	1			1		2
6025-6235	190	1	1		1	1	2
6150-6350	193	1		1	1	1	2
6275-6485	201	1	1	1	1	1	2
6400-6610	190	1					3
6525-6735	198	1	1				3
6650-6860	201	1		1			3
6775-6985	209	1	1	1			3
6900-7110	207	1			1		3
7025-7235	215	1	1		1		3
7150-7360	218	1		1	1		3
7275-7485	226	1	1	1	1		3
7400-7610	220	1				1	3
7525-7735	228	1	1			1	3
7650-7860	231	1		1		1	3
7775-7985	239	1	1	1		1	3
7900-8110	237	1			1	1	3
8025-8235	245	1	1		1	1	3
8150-8360	248	1		1	1	1	3
8275-8485	256	1	1	1	1	1	3
8525-8735	253	1	1				4
8650-8860	256	1		1			4
8775-8985	264	1	1	1			4
8900-9110	262	1			1		4
9025-9235	270	1	1		1		4

PROPPING / 50T PROP

LEGEND 50T ACCESSORIES

Accessory	Weight (kg)
Screw Jack	21
Pivot End Connector	10
Sole Fixing Plate	25
Side Web Connector	12
Needle Beam Clamp	17
50T - 10T Adaptor	11



50T Transfer Plate



50T Base Jack



Needle Beam Clamp



50T Rocking Head



Side Web Connector



Single Bolt Coupler

RACKING WORKING LOAD LIMIT

Length (m)	Angle of Racking (°)								
	0°	10°	20°	30°	40°	45°	50°	60°	90°
1	510	510	510	510	510	510	510	510	510
2	435.8	436	436.3	436.9	437.6	438	438.5	439.4	442.8
2.5	377.9	378.2	378.8	379.5	380.6	381	381.7	383	387.6
3	325.4	325.6	326.2	327.2	328.5	329.2	330	331.6	337.3
3.5	285.5	285.8	286.5	287.7	289.3	290.1	291	293	299.9
4	255.1	255.5	256.4	257.7	259.5	260.6	261.6	264.1	272.2
4.5	229.7	230.2	231.3	232.9	234.9	236.1	237.3	240.2	249.7
5	207.1	207.6	208.8	210.7	212.9	214.3	215.7	218.9	229.6
5.5	185.8	186.5	187.6	189.7	192.2	193.7	195.3	198.7	210.6
6	165	165.7	167	169.1	172	173.4	175.2	179	191.9
6.5	144.3	145	146.5	148.7	151.6	153.1	154.9	159	172.5
7	123.5	124.2	125.7	128	130.8	132.5	134.3	138.5	152.2

Design Considerations:

- A rocking head and jack are positioned at both ends and are laterally restrained.
- The working load limit values are the limit state design capacities divided by a safety factor. An axial load eccentricity of L/200 has been applied about the minor axis.
- All assembly bolts are fully tensioned.
- The effective length of the racking prop is taken as the linear distance between the universal tilt bases at both ends.
- For effective lengths greater than 8600 mm, it is recommended that the props be used for wind-loading applications only.

PROPPING / 100T PROP

Legend 100T Prop

The LEGEND 100T Prop is a heavy-duty, high-load-capacity propping system designed for major construction and infrastructure projects. Engineered for maximum strength and stability, LEGEND props are ideal for falsework, shoring, and temporary support applications, including bridge construction, high-rise developments, and heavy civil engineering works.

FEATURES

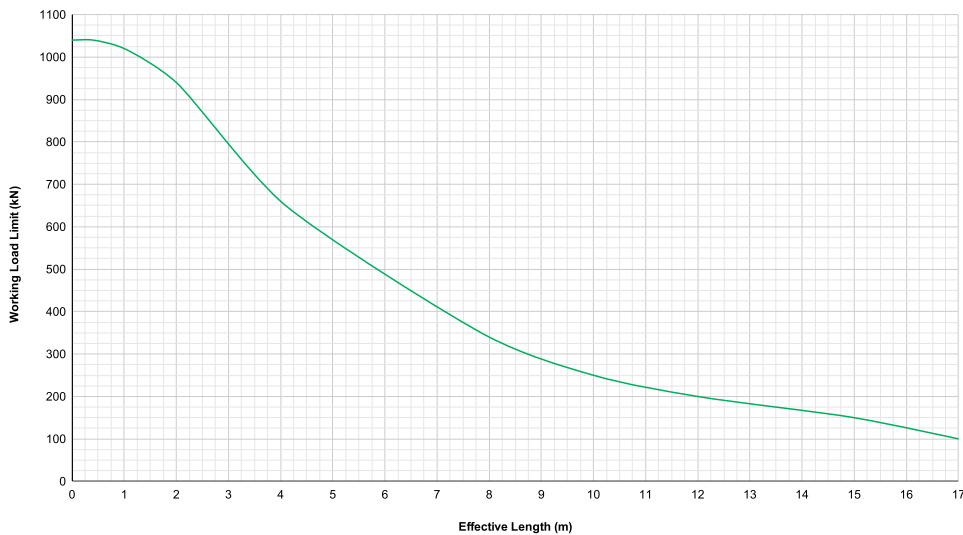
- **Material:** High-strength galvanised steel for durability and corrosion resistance.
- **Load Capacity:** Designed for extreme loads, capable of supporting significant structural weights.
- **Adjustability:** Telescopic height adjustment with precision settings for optimal support.
- **Standard Sizes:** Available in multiple sizes to accommodate various project requirements.
- **Safety Compliance:** Fully meets AS/NZS 3610, AS/NZS 1576, and BS EN 1065 standards.
- **Compatibility:** Works with LEGEND shoring systems, falsework, and heavy-duty propping applications.



APPLICATIONS

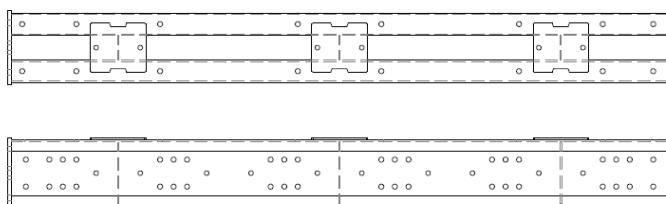
- Bridge construction and deck support
- Falsework and high-load propping in civil engineering
- High-rise building construction and structural modifications
- Heavy-duty shoring for excavations and underpinning
- Industrial and infrastructure support systems

VERTICAL WORKING LOAD LIMIT



Design Considerations:

- Working Load Limit of 1.5 applied
- Props laterally restrained top and bottom
- Eccentricity of L/200 has been applied around the minor axis



LEGEND 100T SECTIONS

Length (mm)	Weight (kg)
90	26
270	36
450	46
900	66
1800	114
2700	162

PROPPING / 100T PROP

SPECIFICATIONS

Prop Height Required (mm)	Total Weight (kg)	Legend 100T Jack (410-620mm)	Number of Intermediate Beams Required						
			90mm	270mm	450mm	900mm	1800mm	2700mm	
410-620	54kg	1							
500-710	79kg	1	1						
680-890	89kg	1		1					
860-1070	99kg	1			1				
950-1160	124kg	1	1		1				
1130-1340	134kg	1		1	1				
1220-1430	159kg	1	1	1	1				
1310-1520	119kg	1					1		
1400-1610	144kg	1	1				1		
1580-1790	154kg	1		1			1		
1670-1880	179kg	1	1	1			1		
1760-1970	164kg	1			1		1		
1940-2150	214kg	1	1	2			1		
2120-2330	224kg	1	1	1	1		1		
2300-2510	191kg	1	1					1	
2480-2690	201kg	1		1				1	
2660-2870	211kg	1			1			1	
2840-3050	261kg	1	1	2				1	
3020-3230	271kg	1	1	1	1			1	
3200-3410	239kg	1	1						1
3380-3590	249kg	1		1					1
3560-3770	259kg	1			1				1
3740-3950	309kg	1	2		1				1
3920-4130	319kg	1	1	1	1				1
4100-4310	304kg	1	1				1		1
4280-4490	294kg	1		1					1
4460-4670	324kg	1			1		1		1
4640-4850	374kg	1	1	2			1		1
4820-5030	384kg	1		3			1		1
5000-5210	351kg	1	1					1	1
5180-5390	361kg	1		1				1	1
5360-5570	371kg	1			1			1	1
5540-5750	396kg	1	2		1			1	1
5720-5930	431kg	1	1	1	1			1	1
5900-6110	399kg	1	1						2
6080-6290	409kg	1		1					2
6260-6470	419kg	1			1				2
6440-6650	469kg	1	2		1				2
6620-6830	479kg	1		3					2
6800-7010	464kg	1	1				1		2
6980-7190	474kg	1		1			1		2
7160-7370	484kg	1			1		1		2
7340-7550	534kg	1	1	2			1		2
7520-7730	544kg	1	1	1	1		1		2
7700-7910	511kg	1	1					1	2
7880-8090	521kg	1		1				1	2
8060-8270	531kg	1			1			1	2
8240-8450	581kg	1	2		1			1	2
8420-8630	591kg	1	1	1	1			1	2
8600-8810	559kg	1	1						3
8780-8990	569kg	1		1					3
8960-9170	579kg	1			1				3
9140-9350	629kg	1	2		1				3
9320-9530	639kg	1	1	1	1				3
9500-9710	649kg	1		2	1				3
9680-9890	634kg	1		1			1		3
9860-10070	644kg	1			1		1		3
10040-10250	694kg	1	2		1		1		3
10220-10430	704kg	1	1	1	1		1		3
10400-10610	671kg	1	1					1	3
10580-10790	681kg	1		1				1	3
10760-10970	691kg	1			1			1	3
10940-11150	741kg	1	2		1			1	3
11120-11330	751kg	1	1	1	1			1	3
11300-11510	736kg	1	1				1	1	3

PROPPING / 100T PROP

LEGEND 100T ACCESSORIES

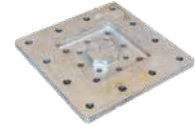
Accessory	Weight (kg)
Racking Head	50
Screw Jack	60
Needle Beam Fixing Clamp	18.3
Transfer Fixing Plate	48.5



100T Rocking Head



100T Base Jack



100T Transfer Plate

RACKING WORKING LOAD LIMIT

Effective Length (m)	e = 10 (mm)	e = 25 (mm)	e = 38 (mm)	Governing Envelope (kN)
2	666	603	558	522
2.5	661.5	598.5	553.5	517.5
3	657	594	549	513
3.5	652.5	589.5	544.5	508.5
4	648	585	540	504
4.5	630	569.3	526.5	490.5
5	612	553.5	513	477
5.5	594	537.8	499.5	463.5
6	576	522	486	450
6.5	549	499.5	465.8	432
7	522	477	445.5	414
7.5	495	454.5	425.3	396
8	468	432	405	378
8.5	441	407.3	382.5	357.8
9	414	382.5	360	337.5
9.5	387	357.8	337.5	317.3
10	360	333	315	297
10.5	337.5	312.8	295.9	279
11	315	292.5	276.8	261
11.5	292.5	272.3	257.6	243
12	270	252	238.5	225
12.5	252	236.3	223.9	211.5
13	234	220.5	209.3	198
13.5	216	204.8	194.6	184.5
14	198	189	180	171
14.5	184.5	176.6	168.8	160.9
15	171	164.3	157.5	150.8
15.5	157.5	151.9	146.3	140.6
16	144	139.5	135	130.5
16.5	135	130.5	126	121.5
17	126	121.5	117	112.5
17.5	117	112.5	108	103.5
18	108	103.5	99	94.5

Design Considerations:

- Working Load Limit of 1.5 applied
- Props laterally restrained top and bottom
- Eccentricity of L/200 has been applied around the minor axis
- Approximate / graph-derived, suitable for engineering reference and comparison.

PROPPING / PROPPING ACCESSORIES

Hardwood Sleepers

Hardwood F11 Sleepers are high-strength, durable timber sleepers graded to F11 structural rating, making them ideal for heavy-duty landscaping, retaining walls, and structural applications. These sleepers are known for their high load-bearing capacity, durability, and natural resistance to harsh weather conditions, making them suitable for both above-ground and in-ground use.

APPLICATIONS

- Heavy-duty outdoor construction projects
- Bridge decking, fencing, and pathway sleepers
- Structural propping and support in construction and civil works
- Railway sleepers and industrial timber applications

SPECIFICATIONS

Model No.	Weight (kg)	Length (cm)	Width (cm)	Height (cm)
Quarter - Sleeper	10	60	20	10
Half - Sleeper	20	120	20	10
Full - Sleeper	40	240	20	10



FEATURES

- **Material:** High-quality Australian hardwood for superior strength and longevity.
- **Structural Grade:** F11 rating, ensuring high bending strength and durability in heavy-load applications.
- **Standard Sizes:** Available in 200mm x 100mm, with lengths typically ranging from 2.4m, 1.2m, and 600mm.
- **Weather Resistance:** Naturally resistant to warping, splitting, and decay.
- **Sustainability:** Responsibly sourced from certified Australian forestry.

GT Beams

A GT Beam is a high-strength structural beam specifically designed for heavy-duty propping, formwork, and falsework applications in construction and civil engineering projects. GT Beams provide exceptional load-bearing capacity while maintaining a lightweight yet durable design, making them ideal for temporary support systems, bridge works, and large-scale concrete construction projects.

APPLICATIONS

- Temporary propping and shoring in construction projects
- Falsework support for bridgeworks and heavy concrete structures
- Structural load transfer in civil engineering projects
- Façade retention systems
- Underpinning and excavation support

SPECIFICATIONS

Model No.	Weight (kg)	Width (cm)	Length (cm)
1.5m GT Beam	8.9	8	150
2.4m GT Beam	14.2	8	240
3m GT Beam	17.7	8	300
4.5m GT Beam	26.6	8	450
6m GT Beam	35.4	8	600



FEATURES

- **Material:** High-grade wooden formwork beam for superior strength and durability, with a 240mm deep by 80mm wide profile.
- **Beam Profile:** Optimized for high bending resistance and load distribution.
- **Sizes:** Width 8cm x standard lengths, typically 1.2m, 2.4m, 3.6m, 4.8m. Custom sizes available.
- **Load Capacity:** Engineered for heavy loads, suitable for falsework, propping, and shoring.
- **Compatibility:** Designed to work with Acrow props, Multi prop, Titan props, hydraulic jacks, and modular scaffolding systems.
- **Compliance:** Meets AS/NZS 3610, AS/NZS 1576, and other relevant structural standards.

PROPPING / PROPPING ACCESSORIES

Needle Beams

Needle Beam Propping is a temporary structural support system used in construction and renovation projects to transfer loads from walls or structures to a stable foundation while openings are created, or structural modifications are made. It is commonly used in underpinning, wall removal, façade retention, and structural alterations, providing safe load distribution to ensure stability.

APPLICATIONS

- Temporary support for wall removals and lintel installations
- Load-bearing support during façade retention
- Underpinning and basement excavations
- Propping for bridge and civil infrastructure works
- Structural modifications in commercial and residential renovations

SPECIFICATIONS

Model No.	Weight (kg)	Length (cm)	Width (cm)	Height (cm)
150UB18	40	200	7.5	15.5
200UB22	50	200	13.3	20.2
200UB22	75	300	13.3	20.2
310UC118	250	200	30.7	31.5
310UC118	250	300	30.7	31.5
310UC118	250	400	30.7	31.5
SHS Needle Beams	21	200	7.5	7.5



FEATURES

- **Material:** High-strength structural steel (typically S355 or equivalent) for maximum durability.
- **Beam Sizes:** Available in various standard lengths (e.g., 100mm, 150mm, 200mm, and 250mm UB or UC beams), with custom sizes available based on load requirements.
- **Load Capacity:** Engineered to handle high-load applications in propping, shoring, and falsework systems.
- **Corrosion Resistance:** Hot dip galvanised or painted for long-term durability in harsh environments.
- **Adjustable Support:** Used in combination with Acrow props, hydraulic jacks, and shoring systems for controlled load transfer.
- **Compliance:** Meets AS/NZS 3610, AS/NZS 1576, and structural engineering safety standards.

Scaffold Tube

A scaffold tube is a strong structural component used in scaffolding to provide support and stability for construction and maintenance work. Typically made from steel or aluminium, it forms the main framework for temporary access platforms and is used with fittings such as couplers and clamps to create secure structures.

APPLICATIONS

- Construction scaffolding frameworks
- Propping and temporary structural support
- Industrial and offshore maintenance scaffolds
- Formwork and falsework in civil projects
- Customised pipe structures for warehouses and storage racks

SPECIFICATIONS

Model No.	Weight (kg)	Outside Dimension (mm)
1m	43	50
2m	8.6	50
3m	12.9	50
4m	17.2	50
5m	21.5	50
6m	25.8	50



FEATURES

- **Material:** High-quality galvanised steel for strength and corrosion resistance.
- **Standard Compliance:** Meets AS/NZS 1576, BS 1139, and EN 39 standards for safety and reliability.
- **Diameter:** Typically, 48.3mm outer diameter, compatible with standard scaffold fittings.
- **Wall Thickness:** Available in 48.3mm (Heavy Duty).
- **Lengths:** Supplied in common sizes (e.g., 6m, 4m, 3m, 2m) or cut to custom lengths as required.
- **Finish:** Hot-dip galvanised for rust resistance or painted for identification purposes.

PROPPING / PROPPING ACCESSORIES

Scaff Tube Coupler

A Scaffold Tube Coupler is a critical component used in scaffolding systems to securely connect scaffold tubes, ensuring structural stability and safety in construction, maintenance, and industrial applications. These couplers are designed to provide strong and reliable connections between steel or aluminium scaffold tubes, allowing for the creation of stable working platforms and access structures.

APPLICATIONS

- Construction scaffolding
- Industrial maintenance access platforms
- Temporary structural support systems
- Bridge and infrastructure projects
- Marine and offshore scaffolding

FEATURES

- High-strength forged or pressed steel construction
- Corrosion-resistant galvanised finish for durability
- Designed to meet AS/NZS 1576, BS 1139, and EN 74 standards
- Provides a secure, slip-resistant connection
- Suitable for various scaffolding and propping applications



Titan Coupler

A Titan Coupler is a high-strength scaffold fitting designed for heavy-duty propping and scaffolding applications. It provides a secure, rigid connection between scaffold tubes, ensuring maximum stability and load-bearing capacity. Titan couplers are widely used in falsework, temporary support structures, and high-load scaffolding systems, particularly in construction, infrastructure, and industrial projects.

COUPLER TYPES

- **Titan Fixed Coupler** – Connects two tubes at a 90-degree angle for rigid and stable structures.
- **Titan Swivel Coupler** – Allows tubes to be joined at variable angles, offering flexibility in complex designs.
- **Titan Sleeve Coupler** – Joins two scaffold tubes end-to-end for continuous lengths in propping and support systems.

APPLICATIONS

- Heavy-duty scaffolding and access platforms
- Propping and falsework support in construction projects
- Bridge and infrastructure temporary works
- High-load industrial and offshore scaffolding
- Formwork and shoring systems

FEATURES

- **Material:** High-grade forged steel for superior strength and durability.
- **Standard Compliance:** Meets AS/NZS 1576, BS 1139, and EN 74 safety standards.
- **Tube Compatibility:** Designed for 48.3mm OD scaffold tubes (galvanised steel or aluminium).
- **Load Capacity:** Engineered for high-load applications in scaffolding and propping systems.
- **Finish:** Hot-dip galvanised or zinc-plated for corrosion resistance and longevity.
- **Bolt Mechanism:** Heavy-duty bolts and locking nuts for a secure, slip-resistant connection.



Single Bolt Coupler



PROPPING / POWER POLE BRACE

Power Pole Brace

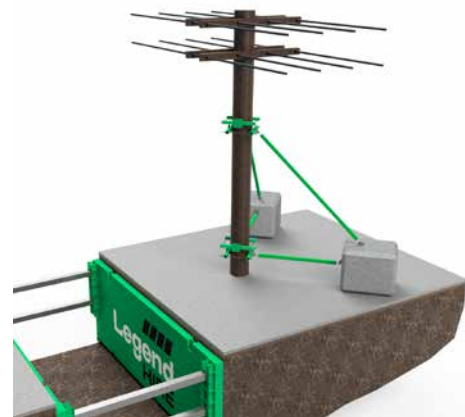
The Legend Hire Power Pole Brace is a purpose-designed system for pole propping and support applications. Built from high-grade structural steel, this unit provides a safe, reliable, and efficient solution for stabilising poles of various sizes – ideal for infrastructure, maintenance, and construction projects.

Our brace system is designed as a compact and cost-effective alternative to bulkier equipment like pole grab trucks. It's compatible with our range of modular and tilt props, allowing quick and secure connection to ground-based systems for a complete engineered setup that meets compliance and safety standards.

Each set includes a steel brace assembly secured using a threaded rod. The design ensures stability in both the X and Y directions, keeping poles firmly in position even under heavy loads.

FEATURES

- Manufactured from 350MPa structural-grade steel
- Provides restraint and stability in both X and Y directions
- Assembled using grade 8.8 threaded rods for strength and durability
- Designed to suit pole diameters between 250–530mm
- Custom configurations available for larger poles or specialised applications



Concrete Blocks – 1.5T

With an approx weight of 1500kg, Legend Hire concrete blocks are ideal as a mass counterweight for a range of propping applications.

Dimensions	1800 x 600 x 600 mm
Weight	Approx. 1500 kg





Legend
HIRE



**Complete our fast & easy
online account application**

**Online applications
approved fast.**

- Hire on 30 days terms and get the products you need, when you need them.
- Apply online in 5-10 minutes.
- Receive a response in 48 hours.



LIFT & SHIFT JACKING HIRE

Spider Crane	60
Crawler Crane	61
Crawler Multi-Loader	62
Glass Lifters	63
Floor Crane	65
Sync-Master Lifting System	67
SDL Jack Stands	68
Track Pin Press	70
Hydraulic Cylinder Jacks	71
Pumps	77
Mechanical	81



**Call for the full
Jacking
Catalogue**

MINI CRANES

HOEFLOM

Spider Crane – C6E

The Hoeflon C6E is a compact, fully electric mini crane renowned for its impressive lifting capabilities and versatility in confined spaces. With a maximum lifting capacity of 3,000 kg and a lifting height of up to 16 meters, it stands out as a powerful tool for tasks such as glass installation and precise steel beam positioning. Its compact dimensions enable it to navigate narrow passages and operate in tight urban environments.

The crane features hydraulically extendable outriggers and a 4.3-meter fly jib, enhancing its stability and reach. Its removable counterweight and intelligent weight distribution system further optimize performance and safety. With a battery life supporting up to eight hours of operation at a 60% duty cycle and a full recharge time of approximately five hours, the C6E is both efficient and reliable for demanding lifting tasks.

FEATURES

- **Maximum Lifting Capacity:** 3,000 kg
- **Maximum Lifting Height:** 16 meters (including 4.3-meter fly jib)
- **Compact Dimensions:** 2.98 m (L) × 0.77 m (W) × 1.88 m (H)
- **Weight:** 2,850 kg (with options)
- **Battery Type:** LiFePO₄ (Lithium Iron Phosphate)
- **Operating Time:** Up to 8 hours at 60% duty cycle
- **Charging Time:** Approximately 5 hours
- **Charging Options:** 230V and 110V single-phase
- **Temperature Range:** Operational between -10°C and +40°C
- **Outriggers:** Hydraulically extendable, adjustable, and folding legs
- **Counterweight:** Removable and extendable for increased capacity
- **Track Width:** Adjustable for maneuverability in tight spaces
- **Winch Capacity:** Up to 3,000 kg with 40 meters of cable
- **Jib Capacity:** 4.3-meter fly jib with 900 kg capacity



Maximum Lifting Capacity	3,000 kg
Maximum Lifting Height	16 m (width 4.3 m fly jib)
Jib Capacity	900 kg (4.3 m fly jib)
Crane Dimensions (L × W × H)	2.98 m × 0.77 m × 1.88 m
Weight (width options)	2,850 kg
Battery Type	LiFePO ₄ (Lithium Iron Phosphate)
Operating Time	Up to 8 hours at 60% duty cycle
Charging Time	Approx. 5 hours
Charging Options	230V / 110V single-phase
Track Width	Adjustable for tight spaces
Outriggers	Hydraulically extendable, folding
Counterweight	Removable and extendable
Winch Capacity	Up to 3,000 kg with 40 m cable
Operating Temperature Range	-10°C to +40°C
Power Source	Fully electric, zero emissions

MINI CRANES

M-CRANE

Crawler Crane – 1030 RT

The M-Crane 1030 RT is a powerful and versatile crawler carrier equipped with a 990 kg maximum capacity crane. With a ground clearance of 170 mm, it can be used in various heavy-duty applications both indoors and outdoors. Fully electric drive, it has class-leading electric drive with two super quiet AC electric motors 5.3 kW each (rated IP67), and features three power management configurations: ECO: 1.2 km, STD: 1.8 km/h, POW: 4.2 km/h.

Equipped with a telescopic crane, it has a maximum lifting capacity of 990 kg and a variable outreach that can be used on slopes up to +/-10° longitudinal and +/- 5° lateral. The M-Crane 1030 RT, with a maximum capacity of 1500 kg, can handle a wide range of loads, making it a versatile solution for a variety of material handling needs.



FEATURES

- Fully electric drive for zero emissions and indoor use
- Compact footprint (2,170 x 890 mm) for tight spaces and confined areas
- Crawler tracks for stability on uneven terrain and slopes up to ±10°
- Multiple speed modes: ECO, Standard, and Power for precise control
- Remote radio control for safe, hands-off operation
- Maximum lifting capacity of 990 kg (2,181 lbs)
- Adjustable outreach with various jib configurations
- 48V AGM battery for extended runtime and low maintenance
- Optional non-marking tracks for indoor surfaces
- Compatible with accessories such as winches, lateral extensions, and work lights
- Low ground pressure to protect sensitive surfaces
- Smooth, precise movements for accurate lifting in tight areas

Max Capacity	1500 kg (<25°)
Max Capacity Crane	990 kg
Max Longitudinal Gradient in Translation	+/- 22°
Max Lateral Gradient in Translation	+/- 10°
Max Longitudinal Gradient in Crane Use	+/- 10°
Max Lateral Gradient in Crane Use	+/- 10°
Width	890 mm
Length	2170 mm
Height	1900 mm
Track Length	1230 mm
Track Width	250 mm
Ground Clearance	170 mm
Platform Ground Height	830 mm
Max Speed	4.2 km/h
Power of Electric Motors	10.6 kW
Ingress Protection IP	IP67
Controller	Remote radio control
Electric Pump for Crane and AUX	48V – 4.5KW
Tow Hook	Standard
Rear Pothole	Standard
Lateral Potholes	Optional
Non-marking Tracks	Optional
Winch KIT	Optional
Work Lights	Optional
Voltage	48 V
Battery Pack (180Ah)	AGM
Charger Input & Time (110V–230V)	32A 48V / 9h
Total Weight	2000 kg

TRACKED CARRIER

ALMACRAWLER Multi-Loader 1.5 FX

The Multi-Loader 1.5 FX is a versatile, fully electric tracked carrier designed to handle heavy loads in tight and challenging environments. With a maximum load capacity of 1,500 kg, it delivers exceptional performance while maintaining a compact footprint, making it ideal for construction sites, landscaping, and industrial applications. Its non-marking track option and low ground pressure allow safe operation on sensitive surfaces, while its high slope capability—up to 45° longitudinally and 30° laterally—ensures stability on uneven terrain.

Equipped with a radio remote control and smooth, precise movements, the Multi-Loader 1.5 FX allows operators to maneuver safely and efficiently, even in confined spaces. Its 48V AGM battery provides reliable runtime with minimal maintenance, and a variety of optional accessories, including swivel plates, dolly kits, and forest kits, enhance its versatility for a wide range of material handling tasks. This compact, powerful, and adaptable machine is a practical solution for professionals seeking efficiency, safety, and performance in a single package.

FEATURES

- Electric tracked carrier for zero emissions and indoor/outdoor use
- Maximum load capacity of 1,500 kg (3,300 lbs)
- Compact design (1,170 x 700 mm) for tight and confined spaces
- Low ground clearance (40 mm) for stability on uneven surfaces
- High slope capability: up to 45° longitudinal and 30° lateral
- Non-marking track option for sensitive surfaces
- Radio remote control for safe, hands-off operation
- 48V AGM battery with approximately 6-hour charge time
- Maximum speed of 2.8 km/h (1.7 mph)
- Optional accessories: swivel plate, dolly kit, forest kit, multi-frame, turntable
- Smooth and precise movements for accurate material placement
- Lightweight design (465 kg) for easy maneuverability



Model	Multi-Loader 1.5 FX
Type	Fully electric tracked carrier
Maximum Load Capacity	1,500 kg (3,300 lbs)
Dimensions (L x W x H)	1,170 mm x 700 mm x 500 mm (46.1" x 27.6" x 19.7")
Track Length	794 mm (31.3")
Track Width	200 mm (7.9")
Ground Clearance	40 mm (1.6")
Platform Height	500 mm (19.7")
Weight	465 kg (1,025 lbs)
Drive System	Electric hub motors
Battery	48V AGM battery
Charging Time	Approximately 6 hours for full charge
Max Speed	2.8 km/h (1.7 mph)
Maximum Longitudinal Slope	45°
Maximum Lateral Slope	30°
Control System	Radio remote control
Track Type	Non-marking tracks available
Optional Accessories	Swivel plate, dolly kit, forest kit, multi-frame, turntable

GLASS LIFTERS

WINLET

Glass Lifter – 400

The Winlet 400 is a versatile glazing robot designed for efficient and safe glass handling in various construction environments. With a maximum lifting capacity of 415 kg and a reach of up to 1,950 mm, it is well-suited for installing large glass panels in both indoor and outdoor settings. The robot features a dual hydraulic boom system, offering precise control with 100 mm side shift and 360° rotation, facilitating accurate positioning of glass elements.

Equipped with wide traction wheels, the Winlet 400 ensures stability on uneven terrains, making it ideal for construction sites with challenging ground conditions. Its compact design allows for easy maneuverability in tight spaces, while the electric-powered system provides a fume-free operation, promoting a safer working environment. The robot's ergonomic controls and efficient battery system further enhance productivity, reducing manual labour and the risk of injury during glass installation tasks.

FEATURES

- Maximum lifting capacity of 415 kg
- Reach of up to 1,950 mm for handling large glass panels
- Dual hydraulic boom system for precise positioning
- 360° rotation and 100 mm side shift for accurate alignment
- Wide traction wheels for stability on uneven surfaces
- Compact design for maneuvering in tight spaces
- Electric-powered operation for fume-free, eco-friendly use
- Ergonomic controls for safe and intuitive operation
- Suitable for both indoor and outdoor applications
- Reduces manual handling and enhances worker safety
- Efficient battery system for extended runtime



Model	Winlet 400TL
Type	Electric-powered glazing robot
Max Lifting Capacity	415 kg (915 lbs)
Max Lift Height	3,635 mm (11.9 ft)
Max Extension	1,950 mm (6.4 ft) from front bumper to suction cup
Extension Capacity	215 kg (474 lbs) at max extension
Side Lift Capacity	200 kg (441 lbs)
Fine Lift on Jib Head	100 mm (3.9 in)
Tilt Function	141° (back 45°, forward 97°)
Rotation	360° continuous rotation
Hydraulic Side Shift	100 mm (3.9 in) linear movement
Suction Cups	4 x 350 mm (13.8 in) diameter
Total Machine Weight	850 kg (1,874 lbs)
Battery	2 x 95 Ah AGM batteries
Power Supply	110V on-board charger
Remote Control	Wired
Wheels	Extra wide steering and traction wheels for enhanced stability
Safety Features	Dual circuit vacuum system, overload monitoring, electromagnetic brakes
Control System Options	MAC (Multi Axis Control) or PSAC (Proportional Single Axis Control)
Suitable Applications	Indoor and outdoor glass installations, including off-road environments

GLASS LIFTERS

WINLET Glass Lifter – 575

The Winlet 575 is a compact yet powerful glazing robot designed to streamline glass installation processes in both indoor and outdoor environments. With a maximum lifting capacity of 575 kg, it efficiently handles large glass panels, reducing the need for traditional lifting methods and minimizing manual labour. Its advanced hydraulic system offers precise control, allowing for smooth tilting, rotation, and side shifting of glass elements. The robot's compact design ensures maneuverability in tight spaces, making it ideal for urban construction sites and high-rise buildings.

Equipped with a dual-circuit vacuum system, the Winlet 575 ensures a secure grip on glass panels, enhancing safety during operation. The wired remote control provides operators with full control over the robot's movements, facilitating accurate placement of glass elements. Additionally, the Winlet 575's robust construction and versatile capabilities make it a valuable asset for glazing contractors seeking efficiency and safety in their operations.

FEATURES

- Maximum lifting capacity of 575 kg
- Reach of up to 3600 mm for handling large glass panels
- 180° rotation and 75 mm side shift for accurate alignment
- Wide traction wheels for stability on uneven surfaces
- Compact design for maneuvering in tight spaces
- Electric-powered operation for fume-free, eco-friendly use
- Ergonomic controls for safe and intuitive operation
- Suitable for both indoor and outdoor applications
- Reduces manual handling and enhances worker safety
- Efficient battery system for extended runtime



Model	Winlet 575
Type	Electric-powered glazing robot
Max Lifting Capacity	575 kg (1,268 lbs)
Max Working Height	3,600 mm (11.8 ft)
Max Extension	1,800 mm (5.9 ft)
Extension Capacity	275 kg (606 lbs)
Side Lift Capacity	275 kg (606 lbs)
Tilt Function	180°
Rotation	180°
Linear Side Shift	75 mm (3 in)
Fine Lift on Jib Head	190 mm (7.5 in)
Suction Cups	4 x 350 mm (13.8 in) diameter
Total Machine Weight	1,300 kg (2,866 lbs)
Weight without Counterweights	1,025 kg (2,260 lbs)
Battery	2 x 150 Ah AGM
Remote Control	Wired
Drive System	Front wheel drive with optional extra wheels for rough terrain
Steering	Rear wheel powered steering for easy positioning
Safety Features	Dual-circuit vacuum system, overload protection, and emergency stop

GLASS LIFTERS

WINLET Glass Lifter – 1000

The Winlet 1000 is a robust and versatile glazing robot designed for the efficient handling and installation of large glass panels weighing up to 1,000 kg. Its compact design, with a total width of just 890 mm, allows it to navigate through narrow spaces and doorways, making it ideal for both indoor and outdoor applications. Equipped with a three-stage telescopic boom, the Winlet 1000 offers impressive reach without compromising its stowed dimensions, ensuring flexibility in various work environments.

Powered by a dual-circuit vacuum system, the Winlet 1000 ensures a secure grip on glass panels, enhancing safety during operation. The robot's advanced hydraulic system provides precise control over lifting, tilting, rotation, and side shifting, allowing for accurate placement of glass elements. Additionally, the Winlet 1000's intelligent gyroscopic control system maintains the set angle during lifting and lowering, facilitating millimeter-precise installation. With a total weight of 1,850 kg, it is designed to operate across rough terrain and low load-bearing floors, offering both power and stability.

FEATURES

- Maximum lifting capacity of 1000 kg
- Reach of up to 2500 mm for large glass panels
- Lifting height up to approximately 4.1 m
- 180° tilt, rotation and side shift for precise placement
- Dual vacuum circuit for secure load handling
- Power assisted steering for easy on site manoeuvring
- Compact design for access through tight spaces
- Remote controlled operation for safer, more efficient installs
- Wide drive wheels for stability on uneven or rough surfaces
- Reduces manual handling and improves overall site safety



Model	Winlet 1000
Type	Electric-powered glazing robot
Max Lifting Capacity	1,000 kg (2,205 lbs)
Max Working Height	4,100 mm (13.5 ft)
Max Extension	2,500 mm (8.2 ft)
Extension Capacity	300 kg (661 lbs)
Side Lift Capacity	300 kg (661 lbs)
Tilt Function	180°
Rotation	360°
Linear Side Shift	75 mm (3 in)
Fine Lift on Jib Head	200 mm (7.9 in)
Suction Cups	4 x 410 mm (16.1 in) diameter
Total Machine Weight	1,850 kg (4,079 lbs)
Battery	2 x 150 Ah AGM
Remote Control	Wired
Drive System	Front wheel drive with optional extra wheels for rough terrain
Steering	Power-assisted steering for easy maneuverability
Safety Features	Dual-circuit vacuum system, overload protection, and emergency stop



FLOOR CRANE

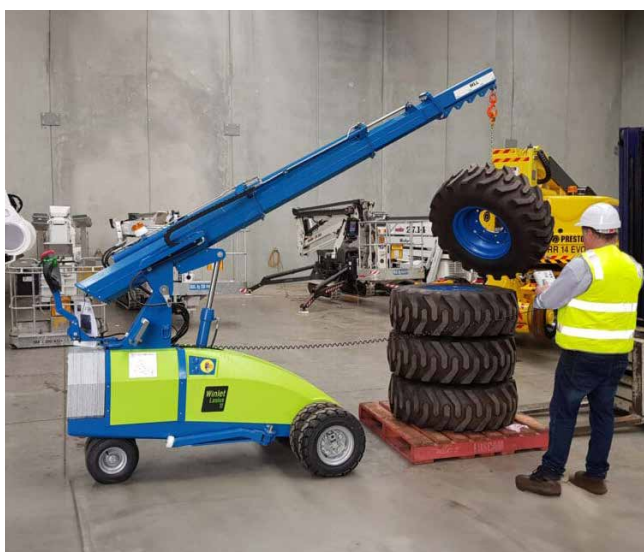
WINLET Floor Crane – Lasius 1000

The Winlet Lasius is a compact yet powerful floor crane designed for lifting and transporting heavy loads up to 1,000 kg. With an overall width of just 880 mm, it can navigate through narrow spaces and doorways, making it ideal for both indoor and outdoor applications. Powered by a 2 x 150 Ah battery system, the Lasius operates without emissions, ensuring a safe working environment. Its self-propelled design eliminates the need for outriggers, allowing for quick setup and efficient operation.

Equipped with a 4,000 mm lift height, the Winlet Lasius offers impressive reach for various lifting tasks, including erecting steel beams, glass and façade installation, machine assembly, and repair work. Its tight turning radius and travel speed of up to 4.2 km/h enhance maneuverability on construction sites. Additionally, the Lasius's lightweight design, with a total weight of 1,325 kg (excluding counterweights), ensures ease of transport and handling.

FEATURES

- Maximum lifting capacity of 1000 kg
- Lift height up to 4000 mm
- Ultra-compact width of just 880 mm for narrow access
- Battery-powered operation with zero emissions
- Self-propelled design with no outriggers needed
- Travel speed up to about 4.2 km/h
- Tight turning radius for excellent manoeuvrability
- Suitable for indoor and outdoor lifting tasks
- Lightweight total machine around 1325 kg
- Ideal for erecting beams, façade installation and machine assembly



Model	Winlet Lasius
Type	Electric-powered floor crane
Max Lifting Capacity	1,000 kg (2,204 lbs)
Lift Height	4,000 mm (13.1 ft)
Overall Width	880 mm (2.9 ft)
Total Weight	1,325 kg (2,921 lbs)
Battery	2 x 150 Ah AGM
Travel Speed	Up to 4.2 km/h
Turning Radius	Tight, enhancing maneuverability
Self-Propelled	Yes, no need for outriggers or levelling
Indoor/Outdoor Use	Yes, suitable for various environments
Zero Emissions	Battery-powered operation
Applications	Erecting steel beams, glass and façade installation, machine assembly, repair work

SYNC-MASTER LIFTING SYSTEM

SYNCMASTER Synchronous Lifting System

The SyncMaster system is an advanced, computer-controlled hydraulic lifting solution designed to deliver unparalleled safety for personnel and property during large-scale engineering and maintenance projects.

This innovative system allows operators to set parameters that prevent the lift from deviating from a predetermined lift plan. SyncMaster continuously monitors and calculates cylinder loads, stroke lengths, total loads, and the center of gravity in real time. If any parameter exceeds the set limits, an alarm is triggered, and the system halts the lift automatically to ensure safety.

FEATURES

- **Center of Gravity Monitoring:** The system defines a programmable rectangular or circular boundary to control the movement of the load's center of mass. If the center of mass nears this boundary, an alarm is triggered, and the lift stops, making it ideal for handling tall or unevenly loaded structures.
- **Precision and Control:** SyncMaster provides precise control and monitoring of complex lifting operations. Real-time data on every configuration, process, and alert is displayed and recorded, eliminating the need for manual measurements and reducing costs. Accuracy to 0.5mm
- **Data Collection and Analysis:** All lift and alert data is logged throughout the operation and can be easily exported for analysis and future lift planning.
- **Multiple Lift Points:** The system supports up to 16 power packs controlled by a single master unit, enabling a maximum of 128 individually controlled cylinder points. It ensures precise, repeatable load movements regardless of weight distribution or load size.
SyncMaster is a self-contained, robust system engineered for ease of transport and operation, offering unmatched safety and efficiency in synchronous lifting.
- **Max operating pressure: 700 bar**
- **15" full colour control screen**
- **Durable Construction:** Rigid steel frame made from 50mm RHS for strength and durability.
- **Weather Resistant:** Designed for use in field conditions.
- **Transport-Friendly:** Includes forklift and sling lifting points for ease of movement.
- **Oil System:** 300L oil capacity with a return line filter, plus oil level and temperature alarms.



SPECIFICATIONS

- **Touch Screen Control:** 15-inch full-color touch screen, scratch and cut-resistant, designed to withstand harsh environments. Displays lift parameters and alerts in real time.
- **Flow Control:** Variable frequency drive motor ensures a wide range of pump flow rates. Controlled by a joystick for smooth directional control.
- **Control Valves:** High-speed, leak-free solenoid valves with 100% duty cycle for accurate flow control.
- **Stroke Transducers:** High-precision linear transducers provide precise positional data. Optional tilt meters are available for added control.
- **Pressure Monitoring:** Pressure transducers monitor loads at each lifting point. Optional load cells are available for highly precise weighing operations.
- **Data Logging and Export:** Lift data is displayed and stored for further analysis. Data can be downloaded in formats compatible with Excel for detailed record-keeping.
- **Emergency Stop:** Prominently located emergency stop ensures quick access during operation.

OPERATION MODES

- 1) **Manual Control:** Each cylinder can be controlled individually via joystick.
- 2) **Uniform Displacement:** Enables parallel or correction lifts for even load distribution.
- 3) **Tilt Control:** Adjusts load positioning along one or two axes.
- 4) **Staged Load Testing:** Applies stepped loads to test pylons, anchors, or other structures.
- 5) **Pre-Load Cylinders:** Advances each cylinder to a set load before starting the lift.
- 6) **Gravity Center Monitoring:** Prevents the center of mass from moving outside the defined boundary.

SDL JACK STANDS

SAFED LOCK® (SDL)

Self-Propelled Lifting Jack and Rated Vehicle Jack Stand for Heavy Mining Vehicles

Durapac SDL Safe-D-Lock Dump Truck and Dozer Jacks

The Safe-D-Lock range by Durapac is a cutting-edge solution for lifting and supporting heavy mining vehicles, including dump trucks, haul trucks, and dozers. With operator safety as a top priority, these jacks combine high-capacity lifting capabilities with the reliability of an integrated mechanical locking system, ensuring fail-safe operation.

Durapac 100-Ton SDL Safe-D-Lock Dozer Lifting Jacks

The new 100-ton Safe-D-Lock jacks are specifically engineered for lifting heavy dozers, including CAT D9, D10, and D11 models, along with other popular dozer brands.

This innovative jack features a low-clearance, reduced-width design, allowing for quick and easy positioning under dozer lift points. Its dual functionality as a lifting jack and rated vehicle jacking stand provides exceptional versatility. By simply lifting and locking out the jack, it can be seamlessly converted into a stable support stand.

FEATURES

- **Capacity Options:** 70-ton (77 US ton), 100-ton (110 US ton), 135-ton (150 US ton), and 181-ton (200 US ton).
- **Stroke Range:** 400–685 mm.
- **Certified:** AS/NZS 2693:2007 for vehicle jacks and AS/NZS 2538:2004 for vehicle support stands.
- **Patented Fail-Safe Design:** Oil-immersed internal mechanical locking quadrants remain engaged during operation, ensuring maximum safety and fail-safe locking in the event of hydraulic failure.
- **Locking mechanism:** Engages in 13mm increments for precise height adjustment.
- **Compact, portable design:** Ideal for workshops or field service vehicles.
- **Hydraulic System:** Powered by a Gast® 3.9 kW air motor.
- **Safety Indicators:** Lock indicators confirm locked and unlocked statuses.
- **Dual Hydraulic Locking Valves:** Provide additional safety and control.
- **Counterbalance Valve:** Ensures smooth and controlled load lowering.
- **Durable Tyres:** Heavy-duty, polyurethane-filled, puncture-proof tyres with 450mm rolling diameters.
- **Optional Powerdrive System:** The Safe-D-Lock jack can be upgraded with the Powerdrive system, transforming it into a self-propelled lifting and jacking solution.
- **Dual Independent Drives:** Each wheel is powered independently for precise forward and reverse control.
- **Deadman Switches:** For added safety and easy manoeuvring.
- **Toggle Switches:** IP65-rated three-position switches (Forward, Neutral, Reverse) for all-weather use.
- **Includes** two M18 Red Lithium™ 5 Ah batteries and a 230 VAC charger.



SDL JACK STANDS

SDL JACK STANDS RANGE

Model No.	Weight (kg)	Stroke (mm)	Jack Capacity (Ton)	Cylinder Effective Area (Cm ²)	Collapsed Height (mm)	Max Lift Height (mm)	Base Plate Diameter (mm)
SDL-07068	1408	680	70	686	143	404	1408
SDL-07081	1680	812	70	686	143	535	1680
SDL-Dozer-Jack	1250	550	100	980	143	274	1250
SDL-10068	1408	680	100	980	143	404	1408
SDL-10081	1680	812	100	980	143	535	1680
SDL-15068	1408	680	150	1324	254	400	1408
SDL-15096	1680	960	150	1324	254	685	1680
SDL-20068	1408	680	200	1781	254	400	1408
SDL-20096	1680	960	200	1781	254	685	1680

SDL JACK STANDS ACCESSORIES

Model No.	Weight (kg)	Height (cm)	Description	Diameter (mm)	Total Length (mm)	Spigot Depth (mm)	Spigot Diameter (mm)
SDE100-150	7	210	150 mm Extension **	112	210	60	50
SDE100-300	13	360	300 mm Extension **	112	360	60	50
SDE150-150	7	210	150 mm Extension **	126	210	60	50
SDE150-300	13	360	300 mm Extension **	126	360	60	50
SDE200-150	8	210	150 mm Extension **	140	210	60	50
SDE200-300	15	360	300 mm Extension **	140	360	60	50
SDLC-100	3	82	Serrated Steel Load Cap *	112	82	60	50
SDLC-150	3	82	Serrated Steel Load Cap *	126	82	60	50
SDLC-200	4	82	Serrated Steel Load Cap *	126	82	60	50
SDS-100	5	110	Serrated Tilt Saddle **	112	110	60	50
SDS-150/200N	5	114	Serrated Tilt Saddle **	126	114	60	50
SDS-200	6	110	Serrated Tilt Saddle **	126	110	60	50

TRACK PIN PRESS

TRACK PIN PRESS Hydraulic Track Pin Presses – Portable TTP Series

The portable TTP-Series Track Pin Press is designed for efficient disassembly and reassembly of chain sections, drive wheels, pulleys, rollers, gears, bearings, and shafts, whether in the workshop or directly in the field.

Your Durapac distributor can provide a comprehensive tooling chart upon request, detailing various machine brands, models, and the corresponding track pin diameters.

The TTP-Series Track Pin Press is a versatile and effective solution for heavy-duty applications, delivering superior performance in both workshop and field environments.

FEATURES

- 350mm stroke, 700-bar cylinder, C-frame, safety guards, and lifting eyebolts
- 20T capacity, 12mm stroke flat jack
- Cylinder seal kit
- Wooden carry case with individual compartments for each tooling set, engraved with their dimensions
- Complete hand tool set
- Lever chain hoist and flat sling for accurate positioning during field operations



Model No.	Weight (kg)	Capacity (Ton)	Frame & Cylinder Weight (Kg)	Package Dimensions (LxWxH)	Suitable Pin Set Diameter (mm)	Suitable Pin Set Length (mm)	Tooling Sets
TTP-50	240	50T	85	150 x 60 x 65	19.3–36.4	150–180	4
TTP-100	500	100T	205	170 x 60 x 75	19.3–60.2	150–320	10
TTP-150	390	150T	372	190 x 75 x 75	22.0–70.0	-	8
TTP-200	630	200T	630	205 x 95 x 95	36.4–73.9	200–440	10

HYDRAULIC CYLINDERS

AC SERIES

Lightweight High-Strength Spring-Return Cylinders

The AC Series features lightweight, high-strength aluminum spring-return cylinders, ideal for applications requiring portability and reduced weight. A specialised anodised coating on the piston rod, cylinder bore, and body enhances durability and resists wear, extending service life. These cylinders offer reliable performance and are easy to transport and handle.

FEATURES

- Capacity: 20 – 200 ton
- Stroke: 150 – 250mm
- Max Operating Pressure: 700 bar



ACD SERIES

Lightweight Double-Acting Aluminium Cylinders

The ACD Series offers lightweight, double-acting aluminum cylinders ideal for applications where portability and low weight matter. Suited for tasks like bridge lifting and machinery maintenance, each cylinder includes a durable steel base plate for added protection and reliable performance in tough conditions.

FEATURES

- Capacity: 30 – 150 ton
- Stroke: 50 – 300mm
- Max Operating Pressure: 700 bar



ACHD SERIES

Double-Acting Hollow Piston Aluminium Cylinders

The ACHD Series features lightweight, double-acting aluminum cylinders with a hollow piston rod, allowing a rod or cable to pass through the entire length. Ideal for tensioning, load testing, and maintenance, their design supports longer strokes and improved efficiency. A durable steel base plate adds protection and ensures reliable performance in tough conditions.

FEATURES

- Capacity: 30 – 100 ton
- Stroke: 75 – 250mm
- Max Operating Pressure: 700 bar



HYDRAULIC CYLINDERS

ACHS SERIES

Spring-Return Hollow Piston Aluminium Cylinders

The ACHS Series offers lightweight, spring-return aluminum cylinders with a hollow piston rod, allowing a rod or cable to pass through the full length. Ideal for tensioning, load testing, bushing extraction, and maintenance, they combine portability with performance. A robust steel base plate adds durability for reliable use in demanding, mobile applications.

FEATURES

- Capacity: 20 – 100 ton
- Stroke: 50 – 150mm
- Max Operating Pressure: 700 bar



ACSLC SERIES

Single-Acting Aluminium Locking Collar Cylinders

The ACSLC Series features single-acting, spring-return aluminum cylinders with a locking collar, ideal for portable, lightweight applications. A threaded piston rod and lock ring secure the load mechanically for safe, long-term retention. An anodized coating on the piston rod and lock ring resists corrosion and wear, while a robust steel base plate adds durability and protection.

FEATURES

- Capacity: 30 – 200 ton
- Stroke: 150mm
- Max Operating Pressure: 700 bar



RAP SERIES

Single-Acting Aluminium Pull Cylinders

The RAP Series features lightweight, spring-return aluminum pull cylinders ideal for steelwork, shipbuilding, and tower tensioning. A chrome-plated steel piston rod ensures durability and corrosion resistance, while a bronze overlay reduces wear for longer service life. Removable clevis eyes add versatility by allowing use of the body and piston rod threads.

FEATURES

- Capacity: 10 – 50 ton
- Stroke: 150mm
- Max Operating Pressure: 700 bar



HYDRAULIC CYLINDERS

RD SERIES

Double-Acting Collar Thread Cylinders

The RD Series features heavy-duty, double-acting cylinders designed for high-power, precision tasks like bridge lifting, hydraulic presses, and construction. Built for high-cycle use, they offer threaded bodies and base mounting holes for flexible installation. A chrome-plated piston rod, bronze bearing overlay, and retract-side safety relief valves ensure durability and reliable performance in demanding environments.

FEATURES

- Capacity: 30 – 100 ton
- Stroke: 75 – 250mm
- Max Operating Pressure: 700 bar



RDHG SERIES

Double-Acting High-Tonnage Cylinders

The RDHG Series features double-acting cylinders with capacities up to 1,600 tons, ideal for heavy jacking, civil construction, and stressing beds. Built for durability, they include a chrome-plated piston rod, bronze overlay for side load protection, and a built-in stop ring for safety. Interchangeable grooved saddles and optional TSG tilt saddles add versatility, while base mounting holes and a concealed safety valve ensure safe, efficient operation.

FEATURES

- Capacity: 50 – 1600 ton
- Stroke: 50 – 300mm
- Max Operating Pressure: 700 bar



RFJ SERIES

Single-Acting Low-Height Flat Cylinders

The RFJ Series features compact, spring-return flat cylinders designed for tight spaces and low-clearance areas. Ideal for maintenance, machinery leveling, construction, and mining, they include a chrome-plated bore and piston rod for corrosion resistance and a bronze overlay for added durability. Standard mounting holes allow easy installation, and a grooved piston rod end improves load grip. Optional stack plate kits (5 to 30 tons) offer added flexibility for low-height applications.

FEATURES

- Capacity: 5 – 150 ton
- Stroke: 6 – 16mm
- Max Operating Pressure: 700 bar



HYDRAULIC CYLINDERS

RG SERIES

Single-Acting Collar Thread Cylinders

The RG Series offers durable spring-return cylinders ideal for production, maintenance, and fabrication. Designed for tough conditions, they feature a chrome-plated bore and piston rod for corrosion resistance, a bronze-reinforced bearing, and a low-friction gland nut for smooth operation. Most models include threaded bodies and base mounting holes for easy installation, with optional TSX tilt saddles (RG-102 to RG-10010) for added versatility. Built for reliable, heavy-duty use.

FEATURES

- Capacity: 5 - 100 ton
- Stroke: 16 - 362mm
- Max Operating Pressure: 700 bar



RHD SERIES

Double-Acting Hollow Piston Cylinders

The RHD Series features double-acting cylinders with a hollow piston rod, allowing a rod or cable to pass through the entire length. Their double-acting design boosts operational speed, making them ideal for longer strokes in tasks like tensioning, load testing, and maintenance. Base mounting holes ensure secure, flexible installation across various applications.

FEATURES

- Capacity: 30 - 150 ton
- Stroke: 38 - 258mm
- Max Operating Pressure: 700 bar



RHS SERIES

Single-Acting Hollow Piston Cylinders

The RHS Series features spring-return cylinders with a hollow piston rod, allowing a rod or cable to pass through the full length. Versatile and reliable, they're ideal for tensioning, load testing, bushing extraction, and maintenance. A chrome-plated bore and piston rod offer corrosion resistance, while a bronze overlay enhances durability. All models include a bolt-on, removable steel base plate for added protection during use.

FEATURES

- Capacity: 2 - 100 ton
- Stroke: 8 - 155mm
- Max Operating Pressure: 700 bar



HYDRAULIC CYLINDERS

RJ SERIES

Single-Acting High-Tonnage Jacking Cylinders

The RJ Series is a single-acting, spring-return cylinder ideal for high-tonnage, short-stroke applications like jacking, testing, weighing, and maintenance—especially when capacities exceed the 100-ton RLP Series. A chrome-plated bore and piston rod provide corrosion resistance, while a bronze overlay enhances durability. Removable hardened saddles come standard for added versatility and performance.

FEATURES

- Capacity: 150 - 200 ton
- Stroke: 50 - 100mm
- Max Operating Pressure: 700 bar



RLP SERIES

Single-Acting Low-Profile Cylinders

The RLP Series features single-acting, spring-return low-profile cylinders designed to deliver maximum stroke with minimal collapsed height. Ideal for construction, mining, rail, and maintenance tasks like jacking, weighing, and leveling, they include a chrome-plated bore and piston rod for corrosion resistance and a bronze overlay for added durability. Optional TSL tilt saddles enhance versatility across all models.

FEATURES

- Capacity: 10 - 100 ton
- Stroke: 38 - 62mm
- Max Operating Pressure: 700 bar



RPLC SERIES

Single-Acting Pancake Locking Collar Cylinders

The RPLC Series features single-acting, load-return pancake locking collar cylinders with a compact design. A threaded piston rod and lock ring enable secure mechanical load holding, allowing pumps and hoses to be removed until lowering is needed—ideal for bridge construction and maintenance. Each cylinder includes a chrome-plated bore and coated piston rod and lock ring for corrosion and abrasion resistance. Standard features include an integral tilt saddle and oil overflow port for added safety and control.

FEATURES

- Capacity: 60 - 500 ton
- Stroke: 45 - 50mm
- Max Operating Pressure: 700 bar



HYDRAULIC CYLINDERS

RSH SERIES

Single-Acting High-Tonnage Cylinders

The RSH Series offers single-acting, load-return cylinders designed for high-tonnage use in tight spaces. Compact and powerful, they're ideal for civil construction, heavy jacking, and demanding tasks. A chrome-plated bore and piston rod provide corrosion resistance, while a bronze overlay reduces wear from side loads. Standard features include a removable grooved saddle, oil overflow port to limit stroke, and side-mounted eye bolts for easy handling. Optional TSX tilt saddles enhance versatility.

FEATURES

- Capacity: 50 - 1000 ton
- Stroke: 50 - 300mm
- Max Operating Pressure: 700 bar



RSHG SERIES

Single-Acting High-Tonnage Cylinders

The RSHG Series offers single-acting, load-return cylinders up to 1,000 tons, built for tough tasks like civil construction and heavy jacking. They feature a chrome-plated bore and piston rod for corrosion resistance, a bronze overlay to protect against side loads, and a built-in stop ring for added safety. Standard interchangeable hardened grooved saddles and optional TSG tilt saddles provide versatility. Base mounting holes and top and side eye bolts ensure easy lifting and positioning.

FEATURES

- Capacity: 50 - 1000 ton
- Stroke: 50 - 300mm
- Max Operating Pressure: 700 bar



RSLC SERIES

Single-Acting High-Tonnage Locking Collar Cylinders

The RSLC Series offers single-acting, load-return cylinders with a threaded piston rod and locking collar for secure, long-term load support—ideal for bridge work and jacking. Each cylinder has a chrome-plated bore and coated parts for corrosion and abrasion resistance. Standard features include removable hardened saddles, an oil overflow port for stroke control, and optional TSX tilt saddles for added flexibility.

FEATURES

- Capacity: 50 - 1000 ton
- Stroke: 50 - 300mm
- Max Operating Pressure: 700 bar



PUMPS

DPA SERIES

Air Hydraulic Power Unit Pump

The DPA Series air-driven hydraulic pumps provide proven, economical power for small to medium hydraulic applications where compressed air is available. With a 700 bar max pressure and durable metal oil reservoirs, they offer reliable, long-lasting performance. A built-in treadle carry handle adds portability, and all units come pre-filled with oil for immediate use. Ideal for a wide range of industrial tasks.

MODELS

- **DPA-16 (1.6 L) & DPA-40 (4.0 L)**
Feature fully serviceable air motors, enabling economical repairs. Each includes a 3-position treadle offering advance, hold, and retract functions.
- **DPA-15R:**
Designed for remote operation, this model includes a 3-meter hand lead with advance, hold, and retract buttons, ideal for operating small to medium-sized single-acting cylinders.
- **DPA-15D & DPA-38D:**
Equipped with a 4-way/3-position manual directional control valve, these pumps are tailored for double-acting cylinders and tools in small to medium applications.
- **DPA-75 (7.5 L):**
Known as the workhorse of the series, it features a 3-position treadle with advance/hold/retract capabilities, a dust cover for the release control valve, and a reinforced metal oil reservoir for added durability.



FEATURES

- Oil Capacity: 350 – 2600 cc
- 1st Stage Flow Range: 3.1 – 30 cc
- Max Operating Pressure: 240 / 700 bar

DPR SERIES

Air Hydraulic Power Unit Pump

The DPR Series offers high-performance, two-speed air-driven pumps designed for applications where air power is preferred. Compatible with single- and double-acting cylinders, they provide flexibility through various valve configurations and optional sub-plates for added control. Each unit features a durable Gast® air motor, slide-style ON/OFF valve, and an 11-liter usable oil reservoir, ensuring reliable performance in demanding industrial settings.

FEATURES

- Air actuated directional control valves, 3- & 4-way versions available
- Pilot check valve
- Adjustable pressure relief valve sub-plate



PUMPS

PD SERIES

Diesel Single Speed Radial Piston Pump

Reliable Heavy-Duty Performance for Field Applications

The PD Series diesel-powered single-speed radial piston units are built to handle demanding tasks in the field, delivering a consistent flow rate of at least 2.5 LPM at pressures up to 700 bar.

These units feature a 50-liter usable oil capacity and are powered by a dependable 3.4 kW Hatz® diesel engine. Designed for ease of transport, the system includes a user-friendly engine control dashboard.

The PDS models come equipped with a remote control pendant on a 4-meter lead, enabling convenient actuation of solenoid valves. All models include an externally adjustable pressure relief valve and a variety of directional control valve options, making them compatible with both single- and double-acting cylinders and tools.

For enhanced functionality, an optional sub-plate style pilot check valve is available, further increasing the versatility of these robust power units.



FEATURES

- Oil Capacity: 50L
- Motor: 3.4kW
- PDS Models: Include remote pendant

PE SERIES

Auto 2-Speed Electric Power Pump

The Durapac auto 2-speed power unit range is designed to deliver exceptional flow performance for applications demanding both speed and power.

The single-phase 08 Series, equipped with a universal motor, is ideal for field use with generators. The 1.5 kW single-phase models run on a standard 10-amp power supply, offering high flow rates in a compact, portable design. For medium to large tonnage cylinders and systems, the three-phase 3 kW and 4 kW, 400-volt models are an excellent choice.

All units feature an externally adjustable pressure relief valve and a variety of directional control valve options, making them suitable for operating single- and double-acting cylinders and tools. Additionally, an optional sub-plate style pilot check valve is available for enhanced functionality.

FEATURES

- Motor Size: 0.84 – 11 kW
- Flow: 0.73 – 8.1 LPM @700 bar
- Max Operating Pressure: 700 bar



PUMPS

PE SERIES

Single Speed Radial Piston Power Pump

The single-speed radial piston power units are designed to provide a variety of flow and power configurations, making them suitable for a wide range of industrial applications.

Built for heavy-duty use, these units deliver flow rates ranging from 0.95 Lpm to 8.10 Lpm at pressures up to 700 bar. They are available with valve configurations to operate single- or double-acting cylinders, with options for manual or solenoid controls.

For enhanced functionality, an optional sub-plate style pilot valve can also be included, offering additional versatility to meet specific operational requirements.

FEATURES

- Flow: 0.95 – 8.10 LPM @700 bar
- Max Operating Pressure: 700 bar

PE SERIES

2-Speed Electric Power Pump

The PES and PEM series electric power units deliver exceptional performance, utilizing advanced gear pump technology for high first-stage output.

These units incorporate an unloading valve that seamlessly transitions full power to the second stage when crossover pressure is reached. This design ensures no power loss and minimizes heat generation, promoting efficient and dependable operation in demanding applications.



PUMPS

PE SERIES

Split Flow Power Pump

The split flow power unit is designed for precise synchronization of lifting and lowering operations, ensuring uniform performance regardless of load distribution.

Powered by a single electric motor, the unit features a single pump body with four pressure outlets, each delivering identical oil flow per motor revolution. This design provides a reliable and efficient solution for critical lifting and lowering tasks.

Standard configurations include manual valve options for double-acting cylinders, with solenoid control available as an optional upgrade. Durapac also offers other configurations, including 2-way, 6-way, and 8-way setups, to accommodate a variety of applications.

FEATURES

- 4 Pressure Outlets
- Options for split combination: 2 way, 6 way & 8 way



PP SERIES

Hydraulic High-Pressure Petrol Pump

This robust 4-stroke hydraulic pump is designed for high-pressure applications and is equipped with a protective cage for enhanced portability and durability on construction sites. The PPM2014 is a versatile and reliable solution for demanding hydraulic tasks in rugged environments.

FEATURES

- **Two-Speed Operation:** Provides efficient performance tailored to your application.
- **Generous Reservoir Capacity:** A 10-liter aluminum reservoir ensures compatibility with a wide range of hydraulic equipment.
- **Reliable Engine:** Powered by a Honda GXV 2.6 kW 4-stroke petrol engine for consistent and powerful operation.
- **Durable Protection Cage:** A sturdy tubular frame offers protection and simplifies lifting and transportation.
- **Advanced Valve System:** Includes a 4-way, 3-position double-acting manual directional valve with an internal check valve for precise control.
- **Optimized Flow Rates:** Delivers a rapid first-stage oil flow of 4.5 liters per minute, transitioning to 1.8 liters per minute at 700 bar (10,000 PSI) for high-pressure applications.



MECHANICAL EQUIPMENT

P SERIES

High-Flow Manual Hand Pump

Durapac's high-flow manual pumps offer powerful, portable performance with a two-speed design—perfect for high-tonnage cylinders where power isn't available. They deliver 113 cc per stroke in the first stage for fast operation and 4 cc at high pressure for heavy loads. Available with 2-way or 4-way valves, these durable, reliable pumps are built for tough conditions.

FEATURES

- Oil Capacity: 8,000 ml
- Max Operating Pressure: 700 bar



P SERIES

Steel-Bodied Manual Hand Pump

The P-Series manual pumps feature durable steel construction, a range of tank sizes, and flow rates for portable hydraulic power. Designed for ease of use, they offer low handle effort and large pressure release knobs. Most models include a carry handle, and the P-2260 provides 30cc per stroke for high-flow needs. Built for reliability, Durapac pumps perform across diverse industries.

FEATURES

- Oil Capacity: 240 - 8,000 ml
- 1st Stage Flow Range: 3.1 - 113 cc
- Max Operating Pressure: 240 / 700 bar



DBJ SERIES

Hydraulic Bottle Jacks

The DBJ-Series bottle jacks offer a premium solution for a wide range of industrial lifting and pushing applications. With capacities ranging from 10 to 20 tons, these models feature an additional screw extension for enhanced versatility. Most models are designed for use in both vertical and horizontal positions, ensuring flexibility to suit various tasks. Additionally, spare parts and seal kits are readily available for all jacks in the series.



MECHANICAL EQUIPMENT

DRJ SERIES

Hydraulic Rail Jacks

The DRJ-10 and DRJ-15 rail jacks are specifically designed for tasks such as aligning, gauging, and lifting rails or sleepers. Constructed with a forged aluminum upright base, these jacks are engineered to be durable, lightweight, and minimize the risk of operator injury. Both models feature a spring return mechanism, enabling the jack to retract to its starting position when not under load. To ensure safety, an internal pressure relief valve prevents overloading. Additionally, the bladder system within the aluminum-protected reservoir allows for use in both horizontal and vertical orientations, offering exceptional versatility.



DJS SERIES

Air Assisted Jack Stands

The DJS Series jack stands are purpose-built to complement the Durapac SDL locking jacks. With a 100-ton rating and certification to meet the AS/NZS 2538:2004 standard for vehicle support stands, these jack stands provide reliable and robust support. The pneumatic assist mechanism raises the central piston to contact the vehicle, while the operator secures it using the locking nut. Designed for convenience, the DJS Series features fork tine pockets and shackle lifting points for easy handling. Compatible with standard SDL extensions, load caps, and swivel load caps, they can also be interconnected using continuous tine pockets to create specialized stands tailored for specific vehicles or applications.



TJ SERIES

Hydraulic Toe Jacks

The TJ-Series toe jacks are a top-quality range, specifically designed for lifting heavy machinery or equipment in situations where access height is limited. With toe lift capacities spanning from 2 to 25 tons, these jacks are built for demanding applications. All models, except the TJ-2, are equipped with a spring return piston for enhanced functionality.





Complete our fast & easy online account application

Online applications approved fast.



- Hire on 30 days terms and get the products you need, when you need them.
- Apply online in 5-10 minutes.
- Receive a response in 48 hours.



EARTHMOVING HIRE

Mini Excavators	86
Compact Excavators	88
Medium Excavators	89
Tracked Loaders	90
Excavator Attachments	91



MINI EXCAVATORS

KUBOTA

Premium Mini Excavator U17-5 (1.7 tonne)

The Kubota U17-5 Premium is a compact 1.7 tonne mini excavator that combines exceptional manoeuvrability with dependable performance, making it ideal for hire across landscaping, residential and light commercial jobs. Its tight tail swing and smooth hydraulic control allow precise digging and trenching in confined spaces, while comfortable operator features and robust build quality ensure reliability throughout the day. Efficient fuel use and easy transportability add to its appeal, offering great versatility for site preparation, utilities work, footings and general earthmoving tasks.

FEATURES

- Meets all Tier 1 specifications required for Tier 1 projects
- Compact size with tight tail swing for confined spaces
- 1.7 tonne operating weight ideal for light to medium earthmoving
- Smooth, responsive hydraulics for precise digging, trenching, and grading
- Durable rubber tracks that minimise ground damage and provide strong traction on a variety of surfaces
- Comfortable operator station with intuitive controls to reduce fatigue



Model No.	Kubota U17-5
Bucket Breakout Force	Approx. 1609 kgf
Engine Power	16.1 hp (12.0 kW)
Fuel Type	Diesel
Ground Clearance	Approx. 155 mm
Max Reach at Ground	Approx. 3,880 mm
Operating Weight	Approx. 1770 to 1805 kg
Overall Width	4.4 m/h
Rated Operating Capacity	Approx. 2300 mm
Travel Speed	1000 to 1300 mm

KUBOTA

Premium Mini Excavator U27-4 (2.7 tonne)

The Kubota U27-4 Premium is a versatile and reliable 2.7-tonne mini excavator ideal for hire across landscaping, construction, and utility jobs. Compact yet powerful, it delivers strong digging performance and smooth, responsive controls in a nimble, easy-to-transport design. Comfortable operator features and excellent stability make it perfect for tight urban sites or bulk earthworks on larger projects. With proven Kubota durability and efficient fuel use, the U27-4 Premium offers dependable performance for trenching, foundations, site prep, and more.

FEATURES

- Meets all Tier 1 specifications required for Tier 1 projects
- 2.7-tonne operating weight offering an excellent balance of power and manoeuvrability
- Compact design ideal for tight access sites and residential projects
- Smooth, responsive hydraulic controls for precise digging & trenching
- Durable rubber tracks that minimise ground damage and provide strong traction on a variety of surfaces
- Powerful and fuel-efficient Kubota diesel engine
- Comfortable operator station with ergonomic controls



Model No.	Kubota U27-4
Bucket Breakout Force	Approx. 2350 kgf
Engine Power	20.9 hp (15.6 kW)
Fuel Type	Diesel
Ground Clearance	Approx. 300 mm
Max Digging Depth	Approx. 2820 mm
Max Reach at Ground	Approx. 4650 mm
Max Travel Speed	Up to 4.4 km/h
Operating Weight	Approx. 2660 to 2700 kg
Overall Width	Approx. 1550 mm

MINI EXCAVATORS

KUBOTA

Premium Mini Excavator U35-4 (3.5 tonne)

The Kubota U35-4 Premium is a powerful and versatile 3.5 tonne mini excavator designed for hire on demanding construction, landscaping, and civil projects. Offering excellent digging force and lifting capacity in a compact zero tail swing design, it delivers outstanding performance while remaining safe and stable in confined or busy worksites. Smooth hydraulics, precise controls, and a comfortable operator environment ensure efficient operation throughout the day, while Kubota's renowned reliability and fuel efficiency provide dependable results for trenching, foundations, site preparation, and general earthmoving tasks.

FEATURES

- Meets all Tier 1 specifications required for Tier 1 projects
- 3.5 tonne operating weight ideal for medium-sized earthmoving, landscaping, and construction tasks
- Premium performance engine delivering reliable power with efficient fuel use
- Compact design with tight tail swing for excellent manoeuvrability in confined spaces
- Smooth, responsive hydraulics for precise digging and grading
- Durable rubber tracks that minimise ground damage and provide strong traction on a variety of surfaces
- Comfortable operator cabin with ergonomic controls



Model No.	Kubota U35-4
Bucket Breakout Force	Approx. 3600 kgf
Engine Power	Approx. 26.5 hp (19.8 kW)
Fuel Type	Diesel
Ground Clearance	Approx. 360 mm
Max Digging Depth	Approx. 3350 mm
Max Reach at Ground	Approx. 5650 mm
Max Travel Speed	Approx. 4.8 km/h
Operating Weight	Approx. 3480 to 3500 kg
Overall Width	Approx. 1750 mm

COMPACT EXCAVATORS

KUBOTA

Compact Excavator U55-4G (5.5 tonne)

The Kubota U55-4G is a robust 5.5 tonne excavator built for hire on medium to heavy-duty jobs, delivering strong digging power, smooth hydraulic performance and excellent stability across varied terrain. Its compact design with minimal tail swing makes it ideal for tight urban sites, trenches and landscaping, while a comfortable operator cabin and intuitive controls help boost productivity throughout long days. Reliable, fuel-efficient and easy to transport, the U55-4G is well-suited to site preparation, utilities work, footings, demolition and general earthmoving tasks.

FEATURES

- Meets all Tier 1 specifications required for Tier 1 projects
- 5.5 tonne operating weight ideal for a wide range of residential, landscaping, and civil jobs
- Compact swing radius for excellent manoeuvrability in tight spaces
- Efficient Kubota diesel engine offering strong performance
- Smooth, responsive hydraulic system for precise digging, trenching, and grading
- Durable rubber tracks that minimise ground damage and provide strong traction on a variety of surfaces
- Comfortable operator environment with clear visibility and user-friendly controls



Model No.	Kubota U55-4G
Bucket Breakout Force	Approx. 5130 kgf
Engine Power	Approx. 49.4 hp (36.8 kW)
Fuel Type	Diesel
Ground Clearance	Approx. 390 mm
Max Digging Depth	Approx. 3700 mm
Max Reach at Ground	Approx. 6570 mm
Max Travel Speed	Approx. 5.4 km/h
Operating Weight	Approx. 5400 to 5500 kg
Overall Width	Approx. 2200 mm

KUBOTA

Compact Excavator KX080-3 (8 tonne)

The Kubota KX080-3 is a reliable 8 tonne excavator ideal for hire on medium to larger earthmoving and construction projects. Built for strength and stability, it delivers excellent digging power and smooth hydraulic performance, making it well-suited to trenching, site preparation, drainage, foundations and utilities work. Its robust design and operator comfort features help ensure productivity throughout the day, while efficient fuel use and ease of transport add to its appeal for a wide range of civil, landscaping and infrastructure jobs.

FEATURES

- Meets all Tier 1 specifications required for Tier 1 projects
- 8 tonne operating weight ideal for medium earthmoving and construction tasks
- Powerful Kubota engine delivering strong performance
- Smooth, efficient hydraulic system for precise digging and trenching
- Durable rubber tracks that minimise ground damage and provide strong traction on a variety of surfaces
- Spacious, comfortable operator cab with excellent visibility and intuitive controls
- Robust undercarriage for durability on tough job sites



Model No.	Kubota KX080-3
Bucket Breakout Force	Approx. 59.5 kN
Engine Power	Approx. 55.4 kW (74.4 hp)
Fuel Type	Diesel
Ground Clearance	Approx. 395 mm
Max Digging Depth	Approx. 4240 mm
Max Reach at Ground	Approx. 6820 mm
Max Travel Speed	Approx. 5.0 km/h
Operating Weight	Approx. 7800 to 8000 kg
Overall Width	Approx. 2300 mm

MEDIUM EXCAVATORS

KOBELCO

Medium Excavator SK135SR-7 (14 tonne)

The Kobelco SK135SR-7 is a robust 14 tonne excavator ideal for hire on medium to large construction, civil and earthmoving projects. With a strong engine and efficient hydraulics it delivers powerful digging, lifting and breakout force, while its short radius design enhances manoeuvrability in tighter job sites. Comfortable operator features and solid stability ensure productive, all-day performance across trenching, site preparation, footings, drainage and general excavation work, making it a dependable choice for a wide range of applications.

FEATURES

- Meets all Tier 1 specifications required for Tier 1 projects
- 14 tonne operating weight ideal for medium to large site works and civil projects
- Short radius tail swing for enhanced manoeuvrability
- Advanced hydraulic system delivering smooth, powerful digging and lifting performance
- Fuel-efficient, low-emission engine
- Spacious, comfortable operator cab with intuitive controls and excellent visibility
- Durable construction and reliable components built to withstand tough job conditions



Model No.	Kobelco SK135SR-7
Bucket Breakout Force	Approx. 120 kN
Engine Power	Approx. 72.5 kW (97 hp)
Fuel Type	Diesel
Ground Clearance	Approx. 400 mm
Max Digging Depth	Approx. 6000 mm
Max Reach at Ground	Approx. 9900 mm
Max Travel Speed	Approx. 5.6 km/h
Operating Weight	Approx. 13900 to 14000 kg
Overall Width	Approx. 2490 mm

KOBELCO

Medium Excavator SK225SR-2 (23 tonne)

The Kobelco SK225SR-2 is a powerful 23 tonne excavator built for hire on demanding earthmoving, civil and construction projects. Its robust engine and advanced hydraulic system deliver excellent digging power, smooth control and strong lifting performance, while the short radius design improves manoeuvrability on tighter sites. Comfortable operator features and reliable stability make it productive throughout long shifts, suited to trenching, bulk excavation, site preparation, drainage, foundations and heavy-duty utility work.

FEATURES

- Meets all Tier 1 specifications required for Tier 1 projects
- 23 tonne operating weight for heavy-duty earthmoving and construction tasks
- Short radius tail swing design for excellent manoeuvrability
- High-performance hydraulic system delivering strong digging and lifting power
- Fuel-efficient engine that balances power
- Robust build quality and durability for demanding site conditions
- Comfortable, operator-focused cab with intuitive controls for long shifts



Model No.	Kobelco SK225SR-2
Bucket Breakout Force	Approx. 173 kN
Engine Power	Approx. 118 kW (158 hp)
Fuel Type	Diesel
Ground Clearance	Approx. 470 mm
Max Digging Depth	Approx. 7500 mm
Max Reach at Ground	Approx. 10900 mm
Max Travel Speed	Approx. 5.5 km/h
Operating Weight	Approx. 22400 to 22700 kg
Overall Width	Approx. 2490 mm

TRACKED LOADERS

KUBOTA

Compact Tracked Loader SVL75 (75 HP)

The Kubota SVL75 is a compact tracked loader with 75 hp, designed for hire on a wide range of jobs requiring powerful lifting, pushing and loading performance in a nimble, easy-to-maneuver package. Its robust undercarriage and responsive controls deliver smooth, efficient operation across landscaping, site preparation, earthmoving and material handling tasks, even in tight or uneven terrain. Comfortable operator features and excellent traction make it ideal for all-day use, while its versatile implement compatibility and dependable Kubota reliability ensure it tackles everything from loading trucks to grading and site cleanup with confidence.

FEATURES

- Meets all Tier 1 specifications required for Tier 1 projects
- 75 hp engine providing reliable power for digging, lifting, and material handling
- Durable tracked undercarriage for excellent traction and stability on uneven ground
- Compact, agile design ideal for tight job sites and confined spaces
- Responsive hydraulic performance for smooth, precise operation
- Comfortable operator station with intuitive controls and clear visibility
- Versatile attachment compatibility to handle a wide range of tasks



Model No.	Kubota SVL75
Bucket Breakout Force	Approx. 90 kN
Engine Power	75 hp (approx. 56 kW)
Fuel Type	Diesel
Ground Clearance	Approx. 200 mm
Hydraulic flow	Approx. 75 L/min
Operating Weight	Approx. 3500 to 3800 kg
Overall Width	Approx. 1990 mm
Rated Operating Capacity	Approx. 1500 kg
Travel Speed	Approx. 12.5 km/h

KUBOTA

Compact Tracked Loader SVL97 (97 HP)

The Kubota SVL97 is a versatile compact tracked loader with 97 hp, engineered for hire on demanding earthmoving, landscaping and site preparation jobs. Offering strong breakout force, smooth responsive controls and excellent traction, it handles heavier loading, grading and material handling tasks with ease while remaining agile in confined spaces. Built for operator comfort and all-day productivity, the SVL97's robust design and implement versatility make it ideal for moving soil, gravel and debris, finishing surfaces and tackling a wide range of civil, construction and agricultural applications.

FEATURES

- Meets all Tier 1 specifications required for Tier 1 projects
- 97 hp powerful engine for strong performance across digging, loading, and material handling
- Robust tracked undercarriage offering excellent traction and stability on varied terrain
- Compact design with tight turning radius for manoeuvrability
- Smooth, responsive hydraulics for precise control
- Comfortable operator environment with easy-to-use controls
- High lift capacity and versatile attachment compatibility for greater jobsite flexibility



Model No.	Kubota SVL97
Bucket Breakout Force	Approx. 125 kN
Engine Power	97 hp (approx. 72 kW)
Fuel Type	Diesel
Ground Clearance	Approx. 200 mm
Hydraulic flow	Approx. 90 L/min
Operating Weight	Approx. 4000 to 4300 kg
Overall Width	Approx. 2150 mm
Rated Operating Capacity	Approx. 1800 kg
Travel Speed	Approx. 12.5 km/h

EXCAVATOR ATTACHMENTS

Augers



The auger range spans five product types covering machines from 1.7 to 45 tonnes, including the S4, S5, S6 and PA series for general earthworks through to major civil and infrastructure projects, plus a purpose built Hard Rock Auger for extreme drilling conditions. Together, they provide heavy duty drilling solutions designed to handle soil, mixed ground, abrasive terrain and solid rock, with durable construction, efficient spoil removal and adaptable wear parts and extensions to suit a wide variety of on site applications.

Auger Range

- 1.7 - 5 tonne - S4
- 4.5 - 8 tonne - S5
- 8 - 22 tonne - S6
- 17 - 45 tonne - PA
- Hard Rock Auger

Rock Breakers



These hydraulic rock breaker attachments are designed to break through hardpan, sub level hard rock and concrete quickly and efficiently.

These high quality hammers are designed with robust steel housings and hardened chisels for durability in demanding conditions and are regularly serviced to ensure maximum productivity and reliable performance.

Rock Breaker Range

- 1 - 1.7 tonne
- 2 - 2.7 tonne
- 3 - 3.5 tonne
- 4 - 4.5 tonne
- 8 - 10 tonne
- 12 - 15 tonne
- 18 - 25 tonne

Compaction Wheels



Premium ground-preparation attachment engineered to quickly and effectively compact soil, gravel and other base materials for a stable finish. The heavy-duty wheels and reinforced frame deliver uniform compaction, reducing rework and improving surface stability on trenches, footings, driveways and landscaping projects.

Compaction Wheel Range

- 4.5 - 5.5 tonne
- 8 - 10 tonne
- 12 - 15 tonne
- 20 - 25 tonne

EXCAVATOR ATTACHMENTS

Hydraulic Grab



The hydraulic grab is a versatile excavator attachment designed for efficient material handling across site clean ups, demolition, landscaping and waste removal. It allows operators to safely pick up, sort and move materials such as rocks, timber, concrete, scrap and green waste with precision and control. Built from high strength steel with reliable hydraulic components, it delivers strong clamping force and smooth operation in demanding conditions.

Hydraulic Grab Range

- 1 - 1.7 tonne
- 2 - 2.7 tonne
- 3 - 3.5 tonne
- 4.5 - 5.5 tonne
- 8 - 10 tonne
- 12 - 15 tonne
- 20 - 25 tonne

Sieve Bucket



The sieve bucket is an efficient excavator attachment designed to sort and separate materials directly on site. Ideal for landscaping, site clean ups, soil preparation and recycling, it allows fine material to pass through while retaining larger debris such as rocks, roots and rubble. Manufactured from heavy duty steel, the sieve bucket boosts productivity by reducing waste, minimising material handling and removing the need for additional screening equipment.

Sieve Bucket Range

- 4.5 - 5.5 tonne
- 8 - 10 tonne
- 12 - 15 tonne
- 20 - 25 tonne

STRINGING & WINCHING HIRE



Call for the full
Stringing
& Winching
Catalogue



Complete our fast & easy online account application

Online applications approved fast.



- Hire on 30 days terms and get the products you need, when you need them.
- Apply online in 5-10 minutes.
- Receive a response in 48 hours.



Swift. Smart. Specialist

1300 890 890
legendhire.com.au



SYDNEY

21-27 Camden Street,
Penrith, NSW 2750



BRISBANE

59 Magnesium Drive,
Crestmead, QLD 4132



MELBOURNE

Lot 1, 31 Macindoe Court,
Spotswood, VIC 3015



SUNSHINE COAST

18 Taylor Court,
Cooroy QLD 4563